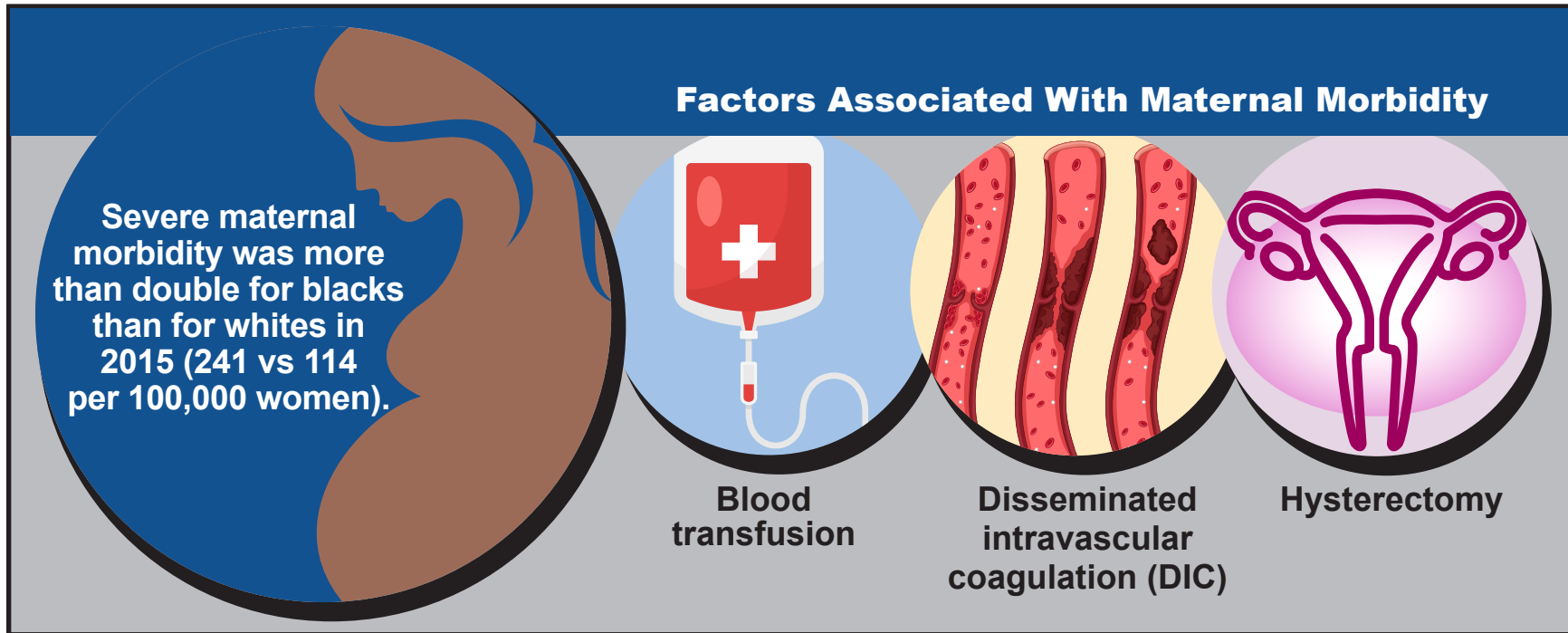




Complications During Labor and Delivery

The rate of severe maternal morbidity at delivery **increased 45 percent from 2006 through 2015**, from 101 to 147 per 10,000 delivery hospitalizations.



Source: HCUP Stat Brief #243: Trends and Disparities in Delivery Hospitalizations Involving Severe Maternal Morbidity, 2006-2015