



# H·CUP

HEALTHCARE COST AND UTILIZATION PROJECT

## HCUP Methods Series



Agency for Healthcare  
Research and Quality



U.S. Department of Health and Human Services  
Agency for Healthcare Research and Quality

**Contact Information:**  
**Healthcare Cost and Utilization Project (HCUP)**  
**Agency for Healthcare Research and Quality**  
**540 Gaither Road**  
**Rockville, MD 20850**  
**<http://www.hcup-us.ahrq.gov>**

**For Technical Assistance with HCUP Products:**

**Email: [hcup@ahrq.gov](mailto:hcup@ahrq.gov)**

**or**

**Phone: 1-866-290-HCUP**

Recommended Citation: Houchens R, Ross, D, Elixhauser A, Jiang J. *Nationwide Inpatient Sample (NIS) Redesign Final Report*. 2014. HCUP Methods Series Report # 2014-04 ONLINE. April 4, 2014. U.S. Agency for Healthcare Research and Quality. Available: <http://www.hcup-us.ahrq.gov/reports/methods/methods.jsp>.

## TABLE OF CONTENTS

<b>EXECUTIVE SUMMARY .....</b>	<b>i</b>
<b>1. INTRODUCTION.....</b>	<b>1</b>
1.1 Background on the NIS .....	1
1.2 Why Redesign?.....	2
1.3 The 2012 NIS Redesign .....	6
1.4 Finalizing the 2012 NIS Design .....	7
1.5 Summary of Changes for the 2012 NIS Redesign .....	10
<b>2. DATA.....</b>	<b>12</b>
2.1 American Hospital Association Hospital Survey .....	12
2.2 State Inpatient Databases .....	12
2.3 Comparison Between HCUP and Non-HCUP Hospitals .....	13
<b>3. SAMPLE DESIGNS .....</b>	<b>15</b>
3.1 Existing NIS Design.....	15
3.2 Stratified Systematic Sample Design: SYS.....	15
<b>4. STATISTICAL METHODS .....</b>	<b>17</b>
4.1 Accuracy Measurement.....	17
4.2 Comparing Designs on Accuracy .....	17
4.3 Bootstrapping Hospital and Discharge Populations .....	17
<b>5. RESULTS .....</b>	<b>20</b>
5.1 Effects of Changing the Definition of the Universe.....	20
5.2 Effects of Sample Design Changes .....	29
<b>6. SUMMARY AND CONCLUSIONS.....</b>	<b>42</b>
<b>APPENDIX A: DIFFERENCES BETWEEN THE AHA-BASED DISCHARGE ESTIMATES AND THE SID-BASED DISCHARGE COUNTS.....</b>	<b>A-1</b>
<b>APPENDIX B: PLANNED DATA ELEMENT CHANGES .....</b>	<b>B-1</b>

## INDEX OF TABLES

Table 1. Impact of Incremental Modifications to the Universe on Universe Statistics.....	viii
Table 2. Impact of Incremental Modifications to the Universe on the Margin of Error for Sample Statistics .....	ix
Table 3. The 2012 Nationwide Inpatient Sample (NIS) Design Changes .....	11
Table 4. The 2011 State Inpatient Databases Summary Statistics (unweighted).....	13
Table 5. Frame versus Universe Hospitals and Discharges by Census Division, 2011 ....	14
Table 6. Incremental Impact of Changes to the Universe on Universe Discharge Counts, 2011.....	22
Table 7. Incremental Impact of Changes to the Universe on Universe Average Length of Stay (ALOS), 2011 .....	26
Table 8. Incremental Impact of Changes to the Universe on Universe Average Total Charges, 2011 .....	27
Table 9. Incremental Impact of Changes to the Universe on Universe In-Hospital Mortality Rates, 2011 .....	28
Table 10. Relative Margin of Error (RME) for National Estimates, Overall .....	30
Table 11. Relative Margin of Error (RME) for National Estimates, By Age Group .....	32
Table 12. Relative Margin of Error (RME) for National Estimates, By Census Division ....	33
Table A-1. Summary of AHA Illinois Hospitals Matched 1:1 to SID Hospitals and Matched to Illinois Department of Health Survey and Without AHA Imputation .....	A-3
Table B-1. Data Elements in the NIS Inpatient Core Files .....	B-1
Table B-2. Data Elements in the NIS Hospital Weights Files.....	B-13
Table B-3. Data Elements in the NIS Disease Severity Measures Files .....	B-17
Table B-4. Data Elements in the NIS Diagnosis and Procedure Groups Files .....	B-21

## INDEX OF FIGURES

<b>Figure 1: 2011 HCUP Partner States .....</b>	<b>4</b>
<b>Figure 2: State Inpatient Databases (SID) versus Nationwide Inpatient Sample (NIS) for Asthma Average Length of Stay (ALOS) .....</b>	<b>5</b>
<b>Figure 3: State Inpatient Databases (SID) versus Nationwide Inpatient Sample (NIS) for Breast Cancer Average Length of Stay (ALOS) .....</b>	<b>5</b>
<b>Figure 4: SID Percentage of AHA Discharge Count, by State, 2011 .....</b>	<b>24</b>
<b>Figure 5: Distribution of Diagnostic Related Group (DRG)-Specific Estimates of Relative Margin of Error, Overall .....</b>	<b>36</b>
<b>Figure 6: Distribution of Diagnosis Related Group (DRG)-Specific Estimates of Relative Margin of Error (RME) for Total Discharges, by Age Groups .....</b>	<b>36</b>
<b>Figure 7: Distribution of Diagnosis Related Group (DRG)-Specific Estimates of Relative Margin of Error (RME) for Average Length of Stay (ALOS), by Age Groups .....</b>	<b>37</b>
<b>Figure 8: Distribution of Diagnosis Related Group (DRG)-Specific Estimates of Relative Margin of Error (RME) for Average Charges, by Age Groups .....</b>	<b>38</b>
<b>Figure 9: Distribution of Diagnosis Related Group (DRG)-Specific Estimates of Relative Margin of Error (RME) for Mortality Rates, by Age Groups.....</b>	<b>39</b>
<b>Figure 10: Distribution of Diagnosis Related Group (DRG)-Specific Estimates of Relative Margin of Error (RME) for Outcomes, by Census Division .....</b>	<b>40</b>

## EXECUTIVE SUMMARY

Many health researchers across the United States rely upon the Healthcare Cost and Utilization Project (HCUP) Nationwide Inpatient Sample<sup>1</sup> (NIS)—a database of hospital inpatient stays and discharges that is sponsored by the Agency for Healthcare Research and Quality (AHRQ). Studies based on the NIS help policymakers understand cost, access, quality, utilization, and health outcomes of hospital services. It is critical that the NIS be designed to optimize its capacity for national estimates.

The NIS sampling frame has grown from 8 States in 1988, to 22 States in 1998, to 46 States in 2011—currently covering 97 percent of the U.S. population. Because the sampling frame for the NIS contains nearly the entire universe of discharges, in 2012 we evaluated the sampling approach to determine whether a different strategy could improve the accuracy of national estimates from the NIS. As a result of the 2012 evaluation study, a new NIS sample design was recommended. This evaluation:

- Identified challenges associated with the current NIS design.
- Suggested ways in which alternative sample designs might address these challenges.
- Assessed the impact that three alternative designs might have on estimates of the hospital outcomes most commonly studied by NIS users.
- Recommended a design that optimized the use of all available data to produce the most precise and stable national estimates.

AHRQ has elected to deploy the systematic sampling design that was recommended, effective with the 2012 NIS that is planned for public release in June, 2014. This report lays out the implementation of the new design.

### Previous Study Results

For a previous evaluation performed during 2012,<sup>2</sup> the project team considered and compared three alternative sampling designs to the present NIS design: (1) a slight modification to the present NIS design that stratified hospitals into nine census divisions instead of four census regions, (2) a Neyman allocation design that optimized the estimates of average length of stay (ALOS), and (3) a self-weighting systematic design that took into account patient characteristics such as diagnoses, age, and admission date.

The team recommended the systematic design because:

- It is self-weighting, making the sample easy for analysts to use.
- It delivers improved accuracy more consistently across diagnosis-related groups (DRGs) compared with the other alternatives.
- It is straightforward to estimate accurate confidence intervals using standard statistical software.

---

<sup>1</sup> With the redesign, beginning with 2012 data AHRQ is changing the name from the “Nationwide Inpatient Sample” to the “National Inpatient Sample.”

<sup>2</sup> Houchens, RL, Ross, DN, Setodji, CM, Uscher-Pines, L, and Roderick J.A. Little. Nationwide Inpatient Sample Redesign Final Report. September 14, 2012. Deliverable #1823.03. Agency for Healthcare Quality and Research, Rockville, MD.

- Its implementation on an annual basis will be efficient and can be accomplished using readily available software and accepted methods.

The present NIS design draws 100 percent of discharges from a sample of approximately 1,000 hospitals, whereas the proposed systematic design samples a fraction of discharges from across all HCUP hospitals (over 4,500 in 2011). The systematic sample is a self-weighted sample design that is similar to simple random sampling, but it is more efficient and it ensures that the sample is representative of the population on the following critical factors—

- Hospital factors
  - Hospital (unidentified)
  - Census division<sup>3</sup>
  - Ownership
  - Urban-rural location
  - Teaching status
  - Number of beds (bedsize category)
- Patient factors
  - DRG
  - Admission month

The superior performance of the systematic design that samples discharges across all hospitals is not surprising, because patient characteristics and mean outcomes vary significantly among hospitals. Variation in mean outcomes such as ALOS, charges, and mortality rates for discharges among hospitals causes a net loss of information under the present NIS design, which draws a sample of hospitals. This is compared with the systematic design, which draws the same total number of discharges across the entire spectrum of hospitals participating in HCUP. Even though the present NIS design stratifies the hospital sample by hospital characteristics, there can be considerable variation in mean outcomes estimated from one hospital sample to the next, depending on which hospitals are selected for the sample. In contrast, the systematic sampling strategy selects a sample of discharges from all hospitals, which better represents the entire universe of hospitals and increases the information in the total sample of discharges.

For national-level estimates, the systematic design reduced the margin of error by 42 to 48 percent over the present NIS design for the outcomes studied (ALOS, average charges, and mortality rates), thus the new NIS design will be about twice as precise as the old design. The margin of error is commonly used by the popular press to describe the reliability of sample statistics. Technically, it is the half-width of a confidence interval around a sample statistic, such as a rate or a mean. The systematic design also consistently reduced the margin of error for estimates at the DRG level.

### **Finalizing the New Design**

In preparation for implementing the systematic sampling design for the 2012 NIS, we:

---

<sup>3</sup> The nine census divisions (New England, Middle Atlantic, East North Central, West North Central, South Atlantic, East South Central, West South Central, Mountain, Pacific) will be the smallest geographic areas that can be represented using the new NIS rather than the four census regions of the original NIS (Northeast, South, Midwest, West).

- Enlisted HCUP Partner support for the new design.
- Removed long-term acute care (LTAC) hospitals from the hospital universe.
- Improved estimates of the total number of discharges in the universe used to derive sample weights by using actual SID discharge counts rather than estimates from the American Hospital Association (AHA) Annual Survey, whenever possible.
- Tied the definition of a hospital to the State-supplied hospital identifier rather than to the American Hospital Association (AHA) hospital identifier whenever possible.
- Estimated the effect of all design changes on sample estimates.

We summarize the results of these activities in the following sections.

### ***Enlisted HCUP Partner Support***

It is important that HCUP Partners who contribute data approve the new design. Consequently, AHRQ and Truven Health Analytics researchers jointly presented the new design to HCUP Partners and requested feedback. Along with the sample design changes, AHRQ proposed the following changes to enhance confidentiality and focus the NIS on national estimates:

- Drop State identifiers to prevent State-level estimates.<sup>4</sup>
- Drop data elements that were not available uniformly across the States, such as secondary payer, admission type, and data elements with State-specific coding.
- Replace hospital identifiers with a pseudo-identifier.

Partners who attended the presentation indicated their support. The NIS is not designed for State-level analyses, so little is lost analytically by omitting the State names from the NIS record. Users may turn to the State Inpatient Databases (SID) for analyses requiring State identification or State-specific data elements. The use of hospital pseudo-identifiers will help protect hospital identities while preserving the analyst's ability to estimate hospital-level variation.

### ***Removed Long-Term Acute Care Hospitals<sup>5</sup>***

The most recent NIS redesign was implemented for the 1998 data year. For the 1998 redesign, rehabilitation hospitals—although classified as community hospitals by the AHA—were excluded from the NIS universe because (1) the State data did not always include discharges from those hospitals, and (2) outcomes for discharges from rehabilitation hospitals were different from discharges from short-term acute care hospitals. Similarly long-term acute care hospitals are classified as community hospitals by the AHA if they have an average length-of-stay (ALOS) less than 30 days. However, during the most recent analyses we determined that they were not uniformly available from all States participating in HCUP, and their ALOS was over 25 days (unlike other community hospitals with an ALOS of about 4.5 days). Thus, we

---

<sup>4</sup> Because the NIS was not stratified by State, State-level estimates were not reliable in the original NIS. Dropping State identifiers also facilitated masking of hospital identifiers.

<sup>5</sup> LTAC hospitals are certified as acute care hospitals, but have an ALOS greater than 25 days. Patients in LTAC hospitals are often transferred from an intensive or critical care unit, generally have more than one serious condition, and are expected to improve and return home. LTAC hospitals typically provide comprehensive rehabilitation, respiratory therapy, head trauma treatment, and pain management services.



decided to eliminate long-term acute care hospitals from future editions of the NIS. The effects of this change were relatively minor, as we report later.

### ***Improved Estimates of the Total Number of Discharges in the Universe***

Historically, NIS sample weights were calculated by dividing the number of universe discharges by the number of sampled discharges within each hospital stratum. The number of universe discharges had been estimated using data from the AHA annual hospital survey. In particular, the total number of discharges in the universe was estimated by the sum of births and admissions contained in the AHA annual survey for all hospitals in the universe. Given that HCUP Partners supply over 95 percent of discharges nationwide, for future editions of the NIS, we will estimate the universe count of discharges within each stratum using the actual count of discharges contained in HCUP data. We will use the AHA counts only for non-HCUP hospitals in the universe.

This option was not considered for the previous redesign because HCUP data included a much smaller percentage of discharges in the United States, and the differences between HCUP counts and AHA counts would tend to adversely affect trends as the mix of HCUP States changed from year to year. In 2011, for hospitals in both the AHA and the SID, in 43 of 46 States, the AHA survey data estimated State discharge totals that were between 1 percent and 17 percent higher than the observed SID discharge totals. Overall, the AHA survey estimated about a 4 percent higher count of discharges than the observed SID count. Although the current high HCUP State participation rate is an important factor, there are several other reasons for switching to the HCUP count of discharges:

- Beginning in 1994, the AHA survey asks for the count of *admissions* rather than the count of *discharges*. The SID yields *discharge* counts, and NIS inferences are intended for the universe of *discharges*.
- The estimate of discharges from the AHA survey is the sum of reported admissions and reported births. Summing these two values results in a double count of newborns in neonatal intensive care units (NICUs), who appear in births and in admissions. We estimated that this resulted in an over count of about 0.5 percent for the universe of discharges.
- Compared with the SID data, the AHA survey admission counts may more frequently include long-term care and swing bed admissions. Based on supplemental 2010 data from the Illinois Department of Public Health, we confirmed that the AHA survey count for Illinois included long-term and swing bed admissions, whereas the HCUP SID data for Illinois did not. The SID discharge count agreed with counts from the Health Department data after eliminating the double counts of newborns in NICUs and after eliminating long-term care and swing bed admissions.
- More than 50 percent of AHA respondents report statistics for fiscal years, which often end in June or September, rather than for calendar years. The SID files used for the NIS always span a calendar year for each hospital. While the totals would likely be similar, there would be some difference between fiscal year and calendar year discharge totals.
- The AHA survey admission counts are missing about 17 percent of the time, and the AHA imputes admission counts from an undocumented regression equation for these missing values.
- In a survey of HCUP Partners, most of the respondents stated that they believe that the SID data provide more reliable discharge counts than those contained in the AHA survey data.

The effects of this change were significant for estimates of discharge counts, but not for estimates of means and rates, as we report below.

### ***Used State Hospital Identifiers Rather than AHA Hospital Identifiers***

A logical corollary of switching from AHA discharge estimates to SID discharge counts was to distinguish unique hospitals using the SID hospital identifiers rather than the AHA hospital identifiers. For the vast majority of hospitals, the SID hospital identifiers are in one-to-one correspondence with the AHA hospital identifiers. However, about 10 percent of the AHA identifiers actually correspond to two or more hospitals in the SID that have common ownership within a hospital system. For these “combined” AHA identifiers, the number of estimated discharges and the number of hospital beds in the AHA data reflect the sum of estimated discharges and the sum of beds, respectively, from the constituent hospitals. As a result, these combined hospitals could have been allocated to the wrong bed size stratum in the sample design. Also, the between-hospital variance was combined with the within-hospital variance for these combined hospitals.

In some States, the SID hospital identifiers demonstrate the same weakness as the AHA hospital identifiers, and those hospitals remain combined in the new design even though we are switching to the SID hospital identifier. However, use of the SID hospital identifiers disaggregates the previously combined hospitals in many other States, which is likely to improve the classification of hospitals and improve variance estimates.<sup>6</sup> The marginal effect of this change on outcome estimates was very small, as we report next.

### ***Estimated the Effects of Design Changes on Sample Estimates***

The switch from drawing *all discharges from a sample of hospitals* to drawing a *sample of discharges from all hospitals* improved the precision and stability of NIS sample estimates. However, the other modifications listed above affected the values of universe statistics (i.e., the values that sample statistics try to estimate). In particular, these modifications had an effect on the numbers and types of discharges in the universe. Using HCUP and AHA annual survey data for 2011, we estimated the effects of these changes:

1. Switching to the *systematic sample design* from the present NIS sample design<sup>7</sup>
2. Eliminating *long-term acute care* hospitals
3. Using observed *SID discharge counts* in place of estimated AHA discharge counts for estimating the total number of discharges in the universe
4. Using *SID hospital identifiers* in place of AHA hospital identifiers to disaggregate hospitals combined by the AHA hospital identifier.

Table 1 summarizes the effects of these modifications on four universe statistics—discharges, ALOS, average charges, and hospital mortality—obtained from HCUP discharge data and AHA survey data for 2011. The columns are numbered for easy reference. Columns 1 and 2 provide the baseline statistics and describe the universe without any modifications.

---

<sup>6</sup> This difference in hospital identifiers renders the NIS hospital-level weights inaccurate. Consequently, hospital-level weights will no longer be provided with the NIS.

<sup>7</sup> This includes a revision of the hospital sampling strata to stratify hospitals by the nine census divisions rather than by the four census regions used in the existing NIS design. Switching to the systematic design had no effect on the universe and, therefore, no effect on values of universe statistics.

Columns 3 and 4 show the effect of excluding LTAC hospitals from the universe. The total number of discharges declined from 38,590,733 (column 1) to 38,338,545 (column 3), which represents a 0.7 percent overall decline. This decline was mostly in the older age groups (not shown). The removal of LTAC hospitals also decreased ALOS by 1.5 percent, average charges by 0.7 percent, and hospital mortality by 2.0 percent (from a mortality rate of 1.91 percent to 1.87 percent). These changes are all to be expected given the characteristics of patients in LTAC hospitals.

Columns 5 and 6 show the effect of replacing AHA discharge counts with SID discharge counts to estimate discharges in the universe (in addition to excluding LTAC hospitals). This action had a significant impact on the universe discharge count. The total number of discharges in the universe fell from 38,338,545 (column 3) to 36,935,306 for a further decrease of 3.6 percent and an overall decrease of 4.3 percent, compared with the discharge count in column 1. The incremental impact on ALOS, average charges, and hospital mortality was almost negligible in comparison.

Finally, the incremental effects of switching from the AHA hospital identifier to the SID hospital identifier (columns 7 and 8) were miniscule for all four outcomes.

In summary, based on the changes implemented in the redesign, we expect overall trends in discharge counts to decline by about 4.3 percent, overall trends in ALOS to decline by about 1.5 percent, overall trends in total charges to decline by about 0.5 percent, and overall trends in hospital mortality to decline by about 2.0 percent.

Table 2 summarizes the effects of these modifications on the margin of error for sample statistics. The entries in Table 2 show the margin of error for the new sample design in relation to the margin of error for the present NIS design. For example, an entry of 0.50 means that the margin of error for a statistic generated from a sample under the new design is half that of a statistic generated from a sample under the present sample design (for a sample of about 8 million discharges). In other words, an entry of 0.50 means that confidence intervals under the new design would be about half the length of confidence intervals under the old design. These results (based on 2011 data) were very similar to last year's results (based on 2010 data).

For discharge counts, the entries of 1.0 indicate that there is no improvement to the margin of error for estimates of total discharges at the national level. This is by design. At the national level, the sample weights always sum to the total number of discharges in the universe. However, the estimates of total discharges for subsets of the population showed substantial improvements, as is shown in the results chapter of this report.

For ALOS, average charges, and hospital mortality, the improvements were substantial at the national level. The margins of error under the new design are expected to be about 53 percent of the old design for ALOS estimates, about 55 percent of the old design for average charge estimates, and about 51 percent of the old design for estimates of hospital mortality. As can be seen by comparing entries across the columns of Table 2, the improvements continue through the incremental changes to the universe definition.

Moreover, as shown in the results chapter of this report, these improvements persist for discharges classified by age, sex, and DRGs. For example, across all 752<sup>8</sup> DRGs, the margins of error for the new design compared with the old design average 46 percent lower for total discharges, 36 percent lower for ALOS, 41 percent lower for average charges, and 28 percent lower for in-hospital mortality rates. Further, for 90 percent of DRGs the new margins of error are at least 41 percent lower for total discharges, 29 percent lower for ALOS, 34 percent lower for average charges, and 22 percent lower for in-hospital mortality rates.

## Conclusions

In sum, the NIS redesign planned to take effect for the 2012 NIS (to be released in 2014) is expected to provide more stable and precise estimates than previous versions of the NIS. Because long-term acute care hospitals will be excluded and because the accuracy of discharge weights will be improved, NIS users should expect a one-time decrease to historical trends for discharge counts of about 4 percent. They should also expect smaller one-time disruptions to historical trends for rates and means estimated from the NIS, beginning with data year 2012. To address this, we recommend that AHRQ provide NIS users with “trend” discharge weights for historical NIS files to minimize the effects of the redesign on estimated trends that cross the 2012 data year.

---

<sup>8</sup> For calendar year 2011, the data combined DRG version 28 (effective 10/1/2010 with 747 DRGs) and version 29 (effective 10/1/2011 with 751 DRGs). One DRG (number 15) in version 28 was replaced by two DRGs (numbers 16 and 17) in version 29, resulting in 752 different DRGs.

**Table 1. Impact of Incremental Modifications to the Universe on Universe Statistics.**

	<i>Old Universe Definition</i> (1998–2011)		Impact of Incremental Modifications to the Universe					
	Include LTAC Hospitals		Exclude LTAC Hospitals					
	Use AHA Discharge Counts		Use AHA Discharge Counts		Use SID Discharge Counts*			
	Use AHA Hospital ID		Use AHA Hospital ID		Use AHA Hospital ID		<i>New Universe Definition</i> Use SID Hospital ID	
	Total Discharges	Percentage of Original Discharges	Total Discharges	Percentage of Original Discharges	Total Discharges	Percentage of Original Discharges	Total Discharges	Percentage of Original Discharges
<b>Column Number</b>	1	2	3	4	5	6	7	8
<b>Discharge Count</b>	38,590,733	100.0	38,338,545	99.3	36,935,306	95.7	36,939,183	95.7
<b>ALOS</b>	4.59	100.0	4.53	98.5	4.52	98.5	4.53	98.5
<b>Average Charges</b>	\$34,962	100.0	\$34,711	99.3	\$34,779	99.5	\$34,790	99.5
<b>Hospital Mortality</b>	0.01905	100.0	0.01867	98.0	0.01866	97.9	0.01866	98.0

Data sources: HCUP State Inpatient Databases (SID) and American Hospital Association (AHA) Survey Data for 2011

\* When discharge counts or hospital identifiers are not available from the SID, estimates from the AHA will be used. This is expected to affect fewer than 10 percent of hospitals.

Abbreviations: ALOS, average length of stay; ID, identification number; LTAC, long-term acute care.

**Table 2. Impact of Incremental Modifications to the Universe on the Margin of Error for Sample Statistics**

	<i>Old Universe Definition (1998–2011)</i>	Impact of Incremental Modifications to New NIS Design		
	Include LTAC Hospitals	Exclude LTAC Hospitals		
	Use AHA Discharge Counts	Use AHA Discharge Counts	Use SID Discharge Counts*	
	Use AHA Hospital ID	Use AHA Hospital ID	Use AHA Hospital ID	<i>New Universe Definition Use SID Hospital ID</i>
<b>Column Number</b>	1	2	3	4
<b>Discharge Count</b>	1.00	1.00	1.00	1.00
<b>ALOS</b>	0.53	0.52	0.52	0.53
<b>Average Charges</b>	0.55	0.58	0.57	0.55
<b>Hospital Mortality</b>	0.57	0.55	0.55	0.51

Based on 500 Simulated Samples, HCUP 2011 Data.

\* When discharge counts or hospital identifiers are not available from the SID, estimates from the AHA will be used. This is expected to affect fewer than 10 percent of hospitals.

Abbreviations: AHA, American Hospital Association; ALOS, average length of stay; LTAC, long-term acute care; SID, State Inpatient Databases

# 1. INTRODUCTION

## 1.1 Background on the NIS

The Nationwide Inpatient Sample<sup>9</sup> (NIS), a database of United States hospital discharge data, is designed to inform policy decisions regarding health and health care at the national and regional levels. Through NIS data, researchers can make inferences about national trends in health care utilization, access, cost, quality, and outcomes. Developed as part of the Healthcare Cost and Utilization Project (HCUP), a Federal-State-Industry partnership sponsored by the Agency for Healthcare Research and Quality (AHRQ), the NIS is the largest all-payer inpatient care database that is publicly available in the United States and has been made publicly available since the 1988 data year.

The NIS contains nationally representative data on about 8 million hospital discharges from about 1,000 hospitals sampled annually, to approximate a 20 percent stratified sample of U.S. community hospitals. For purposes of the NIS, the definition of a *community hospital* is that used by the American Hospital Association (AHA): "all nonfederal short-term general and other specialty hospitals, excluding hospital units of institutions." Consequently, Veterans Affairs hospitals, Indian Health Service hospitals, and other Federal hospitals are excluded. Beginning with 1998, short-term rehabilitation hospitals were also excluded.

The 2011 sampling frame for the NIS included 46 States from the State Inpatient Databases (SID). The SID contain a near-census of hospital discharge records supplied by HCUP Partner State data organizations.<sup>10</sup> The NIS is a stratified probability sample of hospitals in the frame, with sampling probabilities proportional to the number of U.S. community hospitals in each stratum. The frame is limited by the availability of inpatient data from the data sources currently participating in HCUP. The NIS contains clinical and resource use information included in a typical discharge abstract. Researchers can apply for access to some individual SID files through the HCUP Central Distributor.

In 1988, only eight States participated in HCUP—producing a sample of 758 hospitals and more than 5 million discharges. However, by 2011, 46 States were part of the NIS with more than 1,000 hospitals and more than 8 million discharges. To ensure that the NIS sample is representative of the target universe of U.S. community hospitals and discharges, the NIS sample is based on strata using five hospital characteristics: ownership/control, bed size, teaching status, urban/rural location, and U.S. region.

Not all States are present in the NIS data. Stratification is necessary because, historically, substantial differences existed between the sampling frame (HCUP participating States) and the non-HCUP States. For example, at one time HCUP hospitals tended to be larger than non-HCUP hospitals.<sup>11</sup> To the extent that hospital outcomes vary on such unbalanced factors,

---

<sup>9</sup> With the redesign, beginning with 2012 data AHRQ is changing the name from the "Nationwide Inpatient Sample" to the "National Inpatient Sample."

<sup>10</sup> The discharge data may be either incomplete or missing completely for a small fraction of hospitals in the data supplied by HCUP Partners.

<sup>11</sup> Changes in the NIS Sampling and Weighting Strategy for 1998. Rockville, MD: Agency for Healthcare Research and Quality; January 2002. Available at [https://www.hcup-us.ahrq.gov/db/nation/nis/reports/Changes\\_in\\_NIS\\_Design\\_1998.pdf](https://www.hcup-us.ahrq.gov/db/nation/nis/reports/Changes_in_NIS_Design_1998.pdf).

stratification becomes even more important. For 2011, the 46 States participating in HCUP comprised over 97 percent of the U.S. population of hospital discharges, producing a sampling frame that is nearly representative of the entire country. Figure 1 highlights the NIS States by the four U.S. Census Bureau regions divided into the nine census divisions, and lists the States that comprise each census division.

## 1.2 Why Redesign?

Many health researchers across the United States rely upon the NIS. Over 3000 studies have been published using NIS data. Studies based upon the NIS help policymakers to understand cost, access, quality, utilization, and health outcomes of hospital services. It is critical that the NIS be designed to optimize its capacity for national estimates. However, the current NIS design—sampling hospitals and then taking all of their discharges—causes the estimates to be sensitive to situations where certain types of conditions are concentrated in certain hospitals.

For example, Figure 2 is a graph of average length of stay (ALOS) for asthma estimated from the NIS and from the complete HCUP State Inpatient Databases (SID), weighted up to the national level. These are quarterly numbers from 2001 to 2007. In the graph, the two lines are very close—the ALOS from the NIS (in black) closely overlays the ALOS from all HCUP data from the SID (in red). Asthma is a common condition that is not necessarily treated in specialty hospitals; asthma discharges are fairly equally distributed across most types of hospitals.

Figure 3 depicts a different story: ALOS for breast cancer patients. In this graph, the black line (the NIS) diverges substantially from the red line (the SID), and the NIS line shows more year-to-year variability. Breast cancer patients are more likely to be treated at a specialty hospital, which causes the estimates to be sensitive to whether particular hospitals were chosen for the sample. This illustrates the basic impetus for the NIS redesign—even when stratified by hospital characteristics, there can be considerable variation in mean outcomes estimated from one hospital sample to the next, depending on which hospitals are selected for the sample.

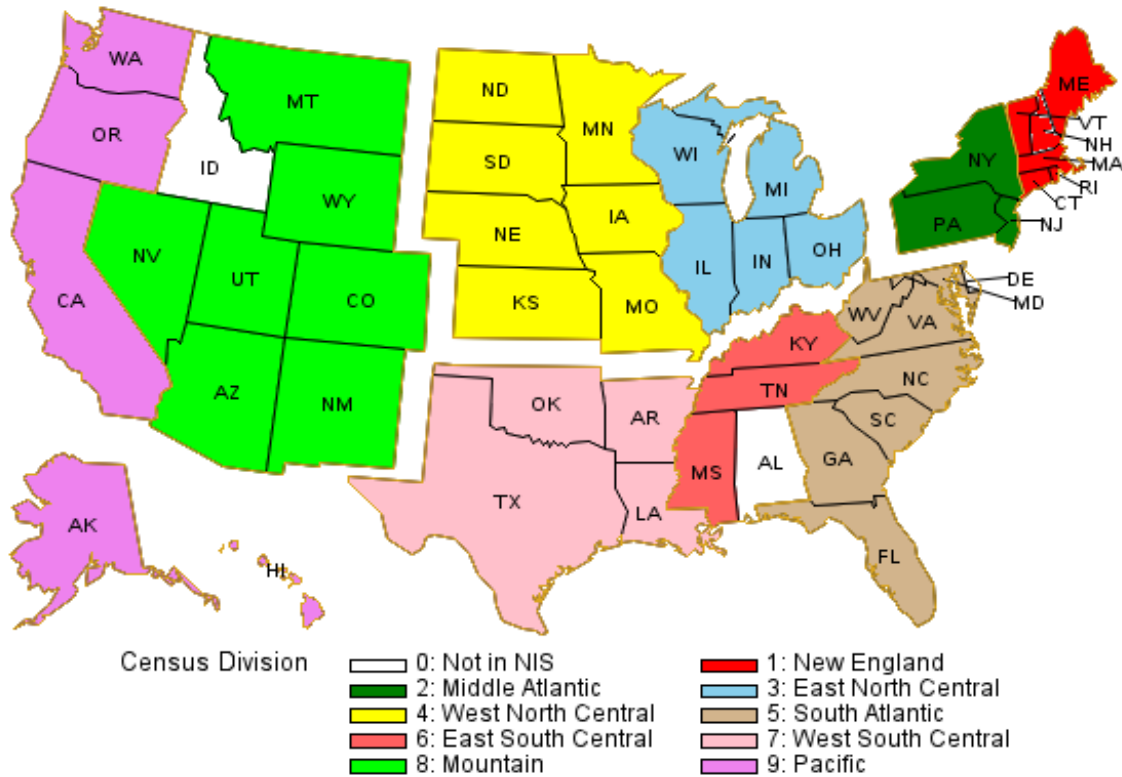
As part of the 2012 sample design evaluation, we reviewed a representative sample of studies that used the NIS and found that only 5 percent of the studies required all discharges from sampled hospitals. Also, researchers who require complete discharge data from every hospital can use the SID data which are readily available now through the Central Distributor, unlike when the NIS was first designed. Because the sampling frame for the NIS now contains nearly the entire universe of hospitals and discharges, we evaluated the sampling approach to determine whether a different strategy could improve the accuracy of national estimates from the NIS. As a result of this evaluation, a new NIS sample design was recommended. This evaluation:

- Identified challenges associated with the current NIS design
- Suggested ways in which alternative sample designs might address these challenges
- Assessed the impact that three alternative designs might have on estimates of the hospital outcomes most commonly studied by NIS users
- Recommended a design that optimized the use of all available data to produce the most accurate national estimates.



AHRQ has elected to deploy the systematic sampling design that was recommended, effective with the 2012 NIS that is planned for public release in June 2014. The systematic sampling strategy selects a sample of discharges from all hospitals, which better represents the entire universe of hospitals and increases the information in the total sample of discharges. This produces more accurate and more consistent sample estimates. This report lays out the implementation of the new design.

Figure 1: 2011 HCUP Partner States<sup>12</sup>



All States, by U.S. Census Bureau<sup>13</sup> Region and Census Division<sup>14</sup>

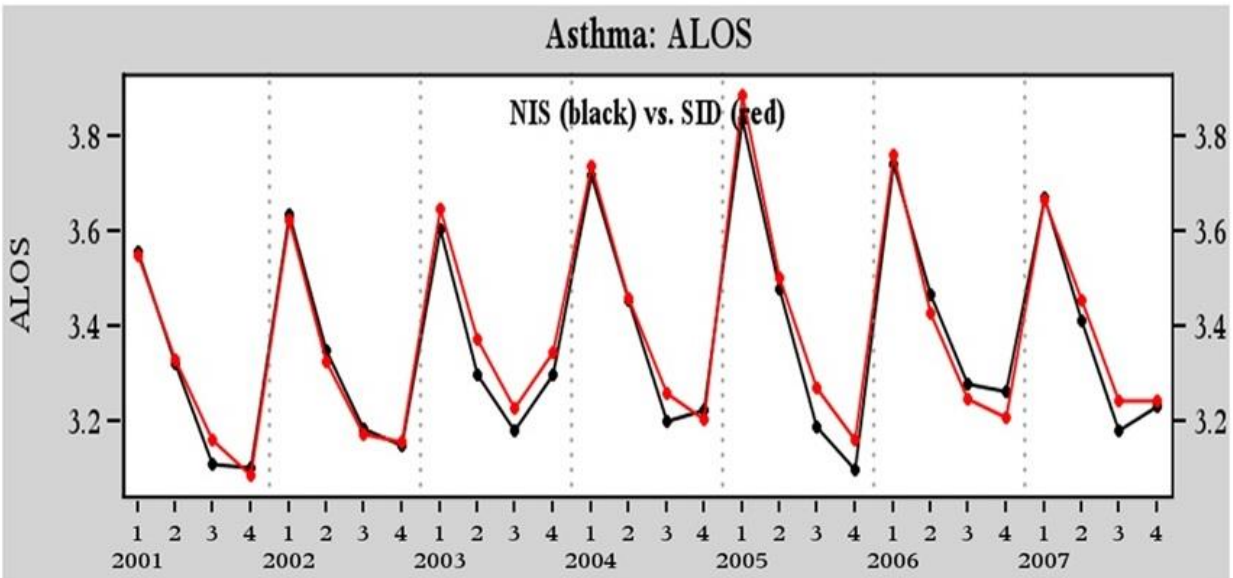
- Region 1 (Northeast)
  - Division 1 (New England) Maine, New Hampshire,<sup>12</sup> Vermont, Massachusetts, Rhode Island, Connecticut
  - Division 2 (Mid-Atlantic) New York, Pennsylvania, New Jersey
- Region 2 (Midwest) (Prior to June 1984, the Midwest Region was designated as the North Central Region.)<sup>13</sup>
  - Division 3 (East North Central) Wisconsin, Michigan, Illinois, Indiana, Ohio
  - Division 4 (West North Central) Missouri, North Dakota, South Dakota, Nebraska, Kansas, Minnesota, Iowa
- Region 3 (South)
  - Division 5 (South Atlantic) Delaware, Maryland, District of Columbia, Virginia, West Virginia, North Carolina, South Carolina, Georgia, Florida
  - Division 6 (East South Central) Kentucky, Tennessee, Mississippi, Alabama
  - Division 7 (West South Central) Oklahoma, Texas, Arkansas, Louisiana
- Region 4 (West)
  - Division 8 (Mountain) Idaho, Montana, Wyoming, Nevada, Utah, Colorado, Arizona, New Mexico
  - Division 9 (Pacific) Alaska, Washington, Oregon, California, Hawaii

<sup>12</sup> New Hampshire participates in HCUP, but did not provide data in time for the 2010 or 2011 NIS.

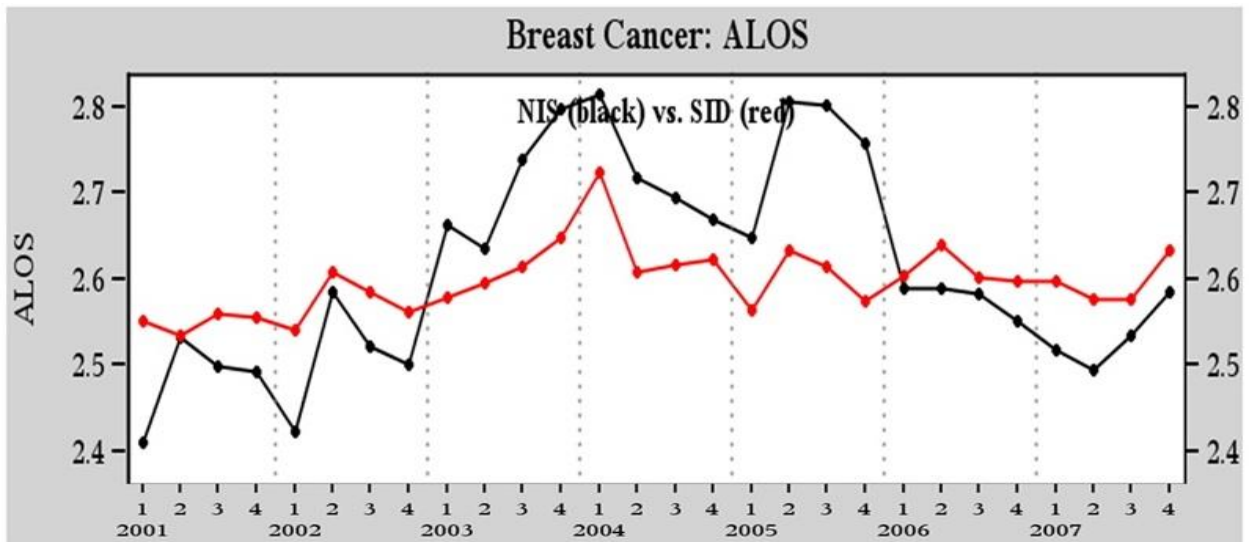
<sup>13</sup> U.S. Census Bureau. Census Bureau Regions and Divisions with State FIPS Codes. [http://www.census.gov/geo/maps-data/maps/pdfs/reference/us\\_regdiv.pdf](http://www.census.gov/geo/maps-data/maps/pdfs/reference/us_regdiv.pdf). Accessed November 5, 2013.

<sup>14</sup> States and areas in italics do not participate in HCUP.

**Figure 2: State Inpatient Databases (SID) versus Nationwide Inpatient Sample (NIS) for Asthma Average Length of Stay (ALOS)**



**Figure 3: State Inpatient Databases (SID) versus Nationwide Inpatient Sample (NIS) for Breast Cancer Average Length of Stay (ALOS)**



### 1.3 The 2012 NIS Redesign

Given the increase in national coverage of HCUP data over the years, AHRQ requested a design evaluation to ensure that the NIS design makes the best use of the data available. Because patient characteristics and mean outcomes vary significantly among hospitals, we focused on alternative sampling strategies that select samples of *discharges from all hospitals* rather than on selecting *all discharges from a sample of hospitals*.

For a previous evaluation performed during 2012, the project team considered and compared three alternative sampling designs to the present NIS design:

- (1) A slight modification to the present NIS design that stratified hospitals into nine census divisions instead of four census regions
- (2) A Neyman allocation design that optimized the estimates of ALOS
- (3) A self-weighting systematic design that took into account patient characteristics such as diagnoses, age, and admission date, as well as hospital characteristics.

After analysis, the team recommended the self-weighting systematic design because:

- It significantly reduced the margin of error for estimates and delivered improved accuracy more consistently across diagnosis-related groups (DRGs) compared with the other alternatives.
- It is easy for analysts to use because of its self-weighting design.
- It is straightforward to estimate accurate confidence intervals using standard statistical software.
- There is little researcher demand for 100 percent of discharges from a sample of hospitals, and researchers who require complete discharge data from every hospital can use the SID data.
- Its implementation on an annual basis will be efficient and can be accomplished using readily available software and accepted methods.

The present NIS design draws 100 percent of discharges from a sample of approximately 1,000 hospitals, whereas the proposed new systematic design samples a fraction of discharges from across all HCUP hospitals (over 4,500 hospitals in 2011). The new systematic sample is a self-weighted sample design that is similar to simple random sampling, but it is more efficient. It also ensures that the sample is representative of the population on the following critical factors—

- Hospital factors
  - Hospital (unidentified)
  - Census division
  - Ownership
  - Urban-rural location
  - Teaching status
  - Number of beds (bedsize category)
- Patient factors
  - DRG
  - Admission month

For national-level estimates, the systematic design reduces the margin of error by 42 to 48 percent over the present NIS design for the outcomes studied (total discharges, average length-of-stay, average charges, and mortality rates), thus the new NIS design will generate estimates

that are about twice as precise as those from the old design. The margin of error is commonly used by the popular press to describe the reliability of sample statistics. Technically, it is the half-width of a confidence interval around a sample statistic, such as a rate or a mean. The systematic design also consistently reduced the margin of error for estimates at the DRG level.

## 1.4 Finalizing the 2012 NIS Design

Following the sampling strategy redesign, in preparation for implementing the systematic sampling design for the 2012 NIS, we performed additional analyses to ensure that other factors associated with the design were optimal. The analyses included the following:

- Enlisted HCUP Partner support for the new design.
- Removed long-term acute care (LTAC) hospitals from the hospital universe.
- Improved estimates of the total number of discharges in the universe used to derive sample weights by using actual SID discharge counts rather than estimates from the American Hospital Association (AHA) Annual Survey, whenever possible.
- Tied the definition of a hospital to the State-supplied hospital identifier rather than to the AHA hospital identifier whenever possible.
- Estimated the effect of all design changes on sample estimates.

We summarize the results of these activities in the following sections.

### 1.4.1 Enlisted HCUP Partner Support

It is important that HCUP Partners who contribute data approve the new design. Consequently, AHRQ and Truven Health researchers jointly presented the new design to HCUP Partners and requested feedback. Along with the sample design changes, AHRQ proposed the following changes to enhance confidentiality and focus the NIS on national estimates:

- Drop State identifiers to prevent State-level estimates.
- Drop data elements that were not available uniformly across the States, such as secondary payer, admission type, and data elements with State-specific coding.
- Replace hospital identifiers with a pseudo-identifier.

Partners who attended the presentation indicated their support. The NIS is not designed for State-level analyses, so little is lost analytically by omitting the State name from the NIS record. Users may turn to the SID, which would be more appropriate for State-specific analyses. The use of hospital pseudo-identifiers will help protect hospital identities while preserving the analyst's ability to estimate hospital-level variation.

### 1.4.2 Removed Long-Term Acute Care Hospitals

The most recent NIS redesign was implemented for the 1998 data year. For the 1998 redesign, rehabilitation hospitals—although classified as community hospitals by the AHA—were excluded from the NIS universe because (1) the State data did not always include discharges from those hospitals, and (2) outcomes for discharges from rehabilitation hospitals were different from discharges from short-term acute care hospitals. Similarly long-term acute care hospitals are classified as community hospitals by the AHA if they have an average length-of-stay (ALOS) less than 30 days. LTAC hospitals are certified as acute care hospitals, but have an ALOS greater than 25 days, unlike other community hospitals with an ALOS of about 4.5 days. Patients in LTAC hospitals are often transferred from an intensive or critical care unit, generally have more than one serious condition, and are expected to improve and

return home. LTAC hospitals typically provide comprehensive rehabilitation, respiratory therapy, head trauma treatment, and pain management services. Importantly, we determined that LTAC hospitals were not uniformly available from all States participating in HCUP. Thus, we decided to eliminate long-term acute care hospitals from future editions of the NIS. The effects of this change were relatively minor, as we report later.

#### 1.4.3 Improved Estimates of the Total Number of Discharges in the Universe

Historically, NIS sample weights were calculated by dividing the number of universe discharges by the number of sampled discharges within each hospital stratum. The number of universe discharges was estimated using data from the AHA annual hospital survey. In particular, the total number of discharges in the universe was estimated by the sum of births and admissions contained in the AHA annual survey for all hospitals in the universe. Given that HCUP Partners supply over 95 percent of discharges nationwide, under the new design we will estimate the universe count of discharges within each stratum using the actual count of discharges contained in HCUP data. We will use the AHA counts only for non-HCUP hospitals in the universe.

This option was not considered for the previous redesign because HCUP data included a much smaller percentage of discharges in the United States, and the differences between HCUP counts and AHA counts would tend to adversely affect trends as the mix of HCUP States changed from year to year. In 2011, for hospitals in both the AHA and the SID, in 43 of 46 States, the AHA survey data estimated State discharge totals that were between 1 percent and 17 percent higher than the observed SID discharge totals. Overall, the AHA survey estimated about a 4 percent higher count of discharges than the observed SID count. Although the current high HCUP State participation rate is an important factor, there are several other reasons for switching to the HCUP count of discharges:

- Beginning in 1994, the AHA survey asks for the count of *admissions* rather than the count of *discharges*. The SID yields *discharge* counts and NIS inferences are intended for the universe of *discharges*.
- The estimate of discharges from the AHA survey is the sum of reported admissions and reported births. Summing these two values results in a double count of newborns in neonatal intensive care units (NICUs), who appear in births and in discharges. We estimated that this resulted in an over count of about 0.5 percent for the universe of discharges.
- Compared with the SID data, the AHA survey admission counts may more frequently include long-term care and swing bed admissions. Based on supplemental 2010 and 2011 data from the Illinois Department of Public Health, we confirmed that the AHA survey count for Illinois included these admissions, whereas the HCUP SID data did not. The SID discharge count agreed with counts from the Health Department data after eliminating the double counting of newborns in NICUs and after eliminating long-term care and swing bed admissions. These analyses are reported in Appendix A.
- More than 50 percent of AHA respondents report statistics for fiscal years, which often end in June or September, rather than for calendar years. The SID files used for the NIS always span a calendar year for each hospital. While the totals would likely be similar, there would be some differences between fiscal year and calendar year discharge totals.
- The AHA survey admission counts are missing about 17 percent of the time, and the AHA imputes admission counts from an undocumented regression equation for these missing values.

- In a survey of HCUP Partners, most of the respondents stated that they believe that the SID data provide more reliable discharge counts than those contained in the AHA survey data.

The effects of this change were significant for estimates of discharge counts, but not for estimates of means and rates, as we report below.

#### 1.4.4 Used State Hospital Identifiers Rather than AHA Hospital Identifiers

A logical corollary of switching from AHA discharge estimates to SID discharge counts was to distinguish unique hospitals using the SID hospital identifiers rather than the AHA hospital identifiers. For the vast majority of hospitals, the SID hospital identifiers are in one-to-one correspondence with the AHA hospital identifiers. However, about 10 percent of the AHA identifiers actually correspond to two or more hospitals in the SID that have common ownership within a hospital system. For these “combined” AHA identifiers, the number of estimated discharges and the number of hospital beds in the AHA data reflect the sum of estimated discharges and the sum of beds, respectively, from the constituent hospitals. As a result, these combined hospitals could have been allocated to the wrong bed size stratum in the sample design. Also, the between-hospital variance was combined with the within-hospital variance for these combined hospitals.

In some States, the SID hospital identifiers demonstrate the same weakness as the AHA hospital identifiers, and those hospitals remain combined in the new design even though we are switching to the SID hospital identifier. However, use of the SID hospital identifiers disaggregates the previously combined hospitals in many other States, which is likely to improve the classification of hospitals and improve variance estimates.<sup>15</sup> The marginal effect of this change on outcome estimates was very small.

#### 1.4.5 Estimated the Effects of Design Changes on Sample Estimates

The switch from drawing all discharges from a sample of hospitals to drawing a sample of discharges from all hospitals improved the *precision and stability of NIS sample estimates*. However, the other modifications listed above affected the *values of universe statistics* (i.e., the values that sample statistics try to estimate). In particular, these modifications had an effect on the numbers and types of discharges in the universe. Using HCUP and AHA annual survey data for 2011, we estimated the effects of these changes:

1. Switching to the systematic sample design from the present NIS sample design<sup>16</sup>
2. Eliminating LTAC hospitals
3. Using observed SID discharge counts in place of estimated AHA discharge counts for estimating the total number of discharges in the universe
4. Using SID hospital identifiers in place of AHA hospital identifiers to disaggregate hospitals combined by the AHA hospital identifier.

---

<sup>15</sup> This difference in hospital identifiers renders the NIS hospital-level weights inaccurate. Consequently, hospital-level weights will no longer be provided with the NIS.

<sup>16</sup> This includes a revision of the hospital sampling strata to stratify hospitals by the nine census divisions rather than by the four census regions used in the existing NIS design. Switching to the systematic design had no effect on the universe and, therefore, no effect on values of universe statistics.

## 1.5 Summary of Changes for the 2012 NIS Redesign

In summary, there are three kinds of changes planned for the 2012 NIS. First, the definition of the universe will be revised. Second, the sample design will switch to a sample of discharges from all frame hospitals rather than all discharges from a sample of frame hospitals. Third, confidentiality will be enhanced by dropping:

- (1) State identifiers to prevent State-level estimates (which were invalid using the current design but were tempting for researchers to use because State identifiers were present in the dataset) and
- (2) data elements that were not available uniformly across the States, such as hospital identifiers, secondary payer, and data elements with State-specific coding.

The target universe remains the same: all discharges from community hospitals in the United States. However, in addition to excluding rehabilitation hospitals (beginning with 1998), we will now also exclude LTAC hospitals because:

- (1) LTAC hospitals are not uniformly available from all HCUP participating States, and
- (2) LTAC hospitals have longer lengths of stay than other community hospitals.

These modifications to the universe have effects (described later in this report) that are independent of the switch from the original NIS sample design to the systematic sample design.

The definition of the sampling frame remains the same under the new NIS design: all discharges from target universe hospitals in the HCUP State data.

The sample size remains the same: 20 percent of discharges in the universe.

The main change to the current sample design is that rather than draw a sample of hospitals and then keep all discharges from the sample of hospitals, we will draw a sample of discharges from *all* hospitals in the sampling frame. The only stratification factor that changes is that we will stratify hospitals by census *division* rather than census *region*.<sup>17</sup>

We will draw the sample using several steps.

- Within each stratum, we will sort discharges by hospital number.
- Then, within each hospital, we will sort discharges by their DRG and their admission month. This sorting ensures that the NIS sample will be representative on these factors.
- We will then sample every  $k^{\text{th}}$  discharge from the sorted list of discharges. For example, if we sample at a rate of 20 percent, then we will sample every 5<sup>th</sup> discharge.

Table 3 summarizes the changes from the present design. The changes are discussed in detail in the following sections of this report.

---

<sup>17</sup> However, researchers will still be able to make estimates for census regions by aggregating census divisions.



**Table 3. The 2012 Nationwide Inpatient Sample (NIS) Design Changes**

<b>Feature</b>	<b>Previous Design (1998-2011)</b>	<b>New 2012 Design</b>
Universe	Included long-term acute care hospitals	Removed long-term acute care hospitals
	Discharge estimates based on AHA admissions plus births	Discharge estimates based on SID discharges when available (for about 90% of all hospitals); otherwise, based on adjusted AHA counts
	Hospitals defined based on AHA IDs	Hospitals defined based on State-supplied hospital identifiers for HCUP states
Sample design	Sample hospitals and then retain all discharges from each sampled hospital	Systematic sample of discharges from all frame hospitals
	Stratified by: <ul style="list-style-type: none"> <li>• hospital census <i>region</i>,<sup>18</sup></li> <li>• ownership,</li> <li>• urban/rural location,</li> <li>• teaching status, and</li> <li>• number of beds (bedsize categories)</li> </ul>	Stratified by <ul style="list-style-type: none"> <li>• hospital census <i>division</i>,<sup>19</sup></li> <li>• ownership,</li> <li>• urban/rural location,</li> <li>• teaching status, and</li> <li>• number of beds (bedsize categories)</li> </ul>
	Sorted by three-digit hospital ZIP Code within strata before sampling	Sorted by hospital and by DRG and admission month within strata before sampling
	Sample without self-weighting requires weights for all estimates	Self-weighting sample requires weights for estimating totals, but not for means and rates
Data elements	Includes State and hospital identifiers and data elements with State-specific coding	Drops State identifiers and data elements that were not available uniformly across the States, such as hospital identifiers, secondary payer, and data elements with State-specific coding Drop hospital weights Retain certain high value State-specific data elements (See Appendix B)

Abbreviations: AHA, American Hospital Association; DRG, diagnosis-related group; ID, identification numbers; SID, State Inpatient Databases

<sup>18</sup> Census region: Northeast, Midwest, South, West

<sup>19</sup> Census division: New England, Middle Atlantic, East North Central, West North Central, South Atlantic, East South Central, West South Central, Mountain, Pacific

## 2. DATA

The Truven Health Analytics team relied on two data sources for our analyses: the 2011 annual hospital survey by the American Hospital Association and the 2011 State Inpatient Databases. The AHA file provides hospital-level information for the universe of community hospitals, including data used to stratify hospitals and the total number of discharges used to calculate sample discharge weights. The SID files comprise the statewide all-payer discharge data that constitute the sampling frame.

### 2.1 American Hospital Association Hospital Survey

Each year, the AHA's Health Forum administers the AHA Annual Survey of Hospitals. The purpose of the survey is to collect utilization, financial, service, and personnel information on each of the nation's hospitals. The survey's overall response rate averages approximately 85 percent each year, which is high for a voluntary survey given its length and the size of the universe (about 6,000 hospitals). For hospitals that do not respond, the AHA imputes items based on prior-year information, so that data are available for all hospitals in the universe.

The hospital universe is defined by all hospitals that were open during any part of the calendar year and were designated as community hospitals in the AHA Annual Survey, excluding rehabilitation hospitals. For purposes of the NIS, the definition of a *community hospital* is that used by the AHA: "all nonfederal short-term general and other specialty hospitals, excluding hospital units of institutions." Consequently, Veterans Affairs hospitals and other Federal hospitals are excluded. Beginning with the 1998 redesign, rehabilitation hospitals are excluded. Beginning with the 2012 redesign, LTAC hospitals are also excluded.

Previously, the number of universe discharges was estimated using data from the AHA annual hospital survey. In particular, the total number of discharges in the universe was estimated by the sum of births and admissions contained in the AHA annual survey for all hospitals in the universe. HCUP Partners supply over 95 percent of discharges nationwide; therefore, beginning with the 2012 NIS, we will estimate the universe count of discharges within each stratum using the actual count of discharges contained in HCUP data and will use the AHA counts only for non-HCUP hospitals in the universe.

### 2.2 State Inpatient Databases

We used the 2011 SID discharge data as a sampling frame to evaluate the sample designs. As mentioned earlier, 46 States contributed a near census of discharges to HCUP in 2011, and these States included over 95 percent of all hospital discharges in the United States. Consequently, the 2011 SID data are comprised of over 95 percent of all U.S. hospital discharges. The participating States were shown earlier in Figure 1.

To compare the alternative sample designs, it was necessary to estimate the "true" national population values for each of the four outcomes of interest. We used 100 percent of all discharges from all community hospitals in all 46 States and weighted these near-census estimates to the population of all 50 States nationwide to obtain "true" population values. Weights were calculated as the ratio of the AHA total counts to the SID discharge totals within each NIS stratum. Because the SID data covered nearly the entire universe, these weights tended to nearly equal 1.

Table 4 provides unweighted 2011 SID values for the outcomes to be considered, overall, and for the age groups, nine census regions, and surgical and medical DRGs.

**Table 4. The 2011 State Inpatient Databases Summary Statistics (unweighted)**

	Total Discharges	Average Length of Stay, days	Average Charges, \$	Mortality Rate, %
<b>Overall</b>	35,463,469	4.60	35,318.46	1.90
<b>Age groups, years</b>				
Missing	5,568	5.21	45,104.26	2.28
0–17	5,623,140	3.82	19,623.68	0.36
18–44	8,749,171	3.63	25,660.70	0.39
45–64	8,789,873	4.98	44,185.45	1.73
65+	12,295,717	5.36	42,997.95	3.80
<b>Census division</b>				
New England	1,597,394	4.61	26,519.53	2.07
Middle Atlantic	5,398,623	5.13	40,576.67	2.06
East North Central	5,788,930	4.46	29,559.81	1.73
West North Central	2,456,314	4.28	27,138.76	1.76
South Atlantic	7,101,287	4.61	32,275.57	1.91
East South Central	1,796,483	4.70	28,666.96	2.24
West South Central	4,230,128	4.74	35,916.49	1.91
Mountain	2,149,322	4.07	35,345.25	1.45
Pacific	4,944,988	4.37	50,519.45	1.97
<b>Diagnosis-related group (DRG)</b>				
Surgical	9,257,742	5.29	65,321.08	1.34
Medical	26,168,987	4.34	24,672.40	2.09
Neither*	36,740	9.98	61,488.73	3.27

\* DRG 998 and DRG 999 (36,740 discharges) are not classified as either medical or surgical.

Variation is evident in outcomes across the subgroups examined in Table 4. For example, the ALOS in the United States was 4.6 days, but this estimate varied among different age groups from 3.63 days for individuals aged 18–44 years to 5.36 days for those older than 65 years. Among the nine census divisions, ALOS varied from 4.07 to 5.13 days. The average charges were estimated to be approximately \$35,000, with the older population generating higher charges. Visible differences were also observed in average charges between the different census divisions. The overall in-hospital mortality rate was estimated at 1.90 percent, with a higher mortality rate for the older population. We evaluated the accuracy of estimates for each sample design by these and other classifications.

### 2.3 Comparison Between HCUP and Non-HCUP Hospitals

Table 5 displays the distribution of hospitals and discharges in the 2011 NIS universe and frame, by census division. The difference between the universe and the frame used to be a major issue for earlier years of the NIS when fewer states participated. However, as shown in Table 5, the frame now includes over 90 percent of hospitals and 95 percent of discharges in the universe. The only census division with less than 80 percent of universe hospitals in the frame is East South Central, with about 73 percent of hospitals in the frame. For eight of the

nine census divisions, over 90 percent of universe discharges are included in the sampling frame. The hospital characteristics used for NIS stratification are well represented in the sampling frame for each of the census divisions.

**Table 5. Frame versus Universe Hospitals and Discharges by Census Division, 2011**

Census Region / Division		Universe		Sampling Frame		Frame vs. Universe	
		Hospitals	Discharges	Hospitals	Discharges	Frame % of Universe Hospitals	Frame % of Universe Discharges
<b>United States</b>		4,988	36,939,183	4,535	35,348,805	90.918	95.694
<b>Northeast</b>	<b>All</b>	647	7,124,590	610	6,980,102	94.281	97.971
	<b>New England</b>	<b>195</b>	<b>1,736,605</b>	<b>161</b>	<b>1,597,394</b>	<b>82.564</b>	<b>91.983</b>
	<b>Middle Atlantic</b>	<b>452</b>	<b>5,387,984</b>	<b>449</b>	<b>5,382,708</b>	<b>99.336</b>	<b>99.902</b>
<b>Midwest</b>	<b>All</b>	1,448	8,380,428	1,364	8,228,491	94.198	98.187
	<b>East North Central</b>	<b>759</b>	<b>5,822,669</b>	<b>732</b>	<b>5,774,016</b>	<b>96.442</b>	<b>99.164</b>
	<b>West North Central</b>	<b>689</b>	<b>2,557,759</b>	<b>632</b>	<b>2,454,475</b>	<b>91.727</b>	<b>95.961</b>
<b>South</b>	<b>All</b>	1,955	14,124,594	1,698	13,059,790	86.854	92.461
	<b>South Atlantic</b>	<b>735</b>	<b>7,349,542</b>	<b>711</b>	<b>7,085,545</b>	<b>96.734</b>	<b>96.407</b>
	<b>East South Central</b>	<b>426</b>	<b>2,489,063</b>	<b>313</b>	<b>1,787,123</b>	<b>73.474</b>	<b>71.799</b>
	<b>West South Central</b>	<b>794</b>	<b>4,285,988</b>	<b>674</b>	<b>4,187,122</b>	<b>84.886</b>	<b>97.693</b>
<b>West</b>	<b>All</b>	938	7,309,571	863	7,080,422	92.004	96.865
	<b>Mountain</b>	<b>393</b>	<b>2,303,227</b>	<b>335</b>	<b>2,144,318</b>	<b>85.241</b>	<b>93.100</b>
	<b>Pacific</b>	<b>545</b>	<b>5,006,344</b>	<b>528</b>	<b>4,936,104</b>	<b>96.880</b>	<b>98.596</b>

### 3. SAMPLE DESIGNS

We compared two sample designs: the existing NIS design and the stratified systematic design (SYS). For both designs we selected approximately the same number of observations: 8 million discharges, representing approximately 20 percent of the roughly 37 million yearly discharges in the United States.

#### 3.1 Existing NIS Design

The Existing NIS design is the sampling strategy used by the current NIS design in which the hospital sample size is equal to approximately 20 percent of the hospital universe within each sampling stratum. Within each stratum, hospitals are sampled at random from the sampling frame. Within each sampled hospital, 100 percent of discharges are included in the existing NIS design. The hospital sampling strata are defined by the following five hospital characteristics:

**Geographic regions**, composed of the four U.S. census regions: Northeast, Midwest, West, and South. Hospital practice patterns have been shown to vary substantially by region.

**Hospital location**, defined as urban or rural area hospitals. Government payment policies often differ according to this designation. Also, rural hospitals are generally smaller and offer fewer services than urban hospitals.

**Teaching status**, for urban hospitals, designated as teaching and nonteaching hospitals. The mission of teaching hospitals differs from that of nonteaching facilities.

**Ownership**, designated as public (non-Federal government owned), private not-for-profit, or private investor-owned. For some regions, some ownership categories are omitted or collapsed to protect hospital confidentiality, especially where investor-owned hospitals are rare. Hospitals in different ownership categories tend to have different missions and different responses to government regulations and policies.

**Hospital size**, split into small, medium, or large hospitals. Hospital size categories are based on the number of hospital beds and are specific to the hospital's region, location, and teaching status.

For improved geographic representation, within each stratum the frame of community hospitals was sorted by their State and the hospital's three-digit ZIP Code (the first 3 digits of the common five-digit ZIP Code). Hospitals with three-digit codes that are proximal are generally near one another within a State. Within each stratum, a systematic random sample of hospitals of up to 20 percent of the total number of U.S. hospitals was selected from the sorted list of hospitals. The sample was constrained to have at least two hospitals from each stratum occasionally requiring adjacent strata to be merged. When there were insufficient numbers of hospitals within a stratum to meet the 20 percent sampling goal, all of the available hospitals were selected. Every community hospital *in the sampling frame* has a chance of being selected.

#### 3.2 Stratified Systematic Sample Design: SYS

The strata for the SYS design are the same as those for the NIS sample design except that the four census regions are replaced by the nine census divisions—New England, Middle Atlantic, East North Central, West North Central, South Atlantic, East South Central, West South Central, Mountain, and Pacific.

This design calls for a sample of discharges from all hospitals, selected from an ordered sampling frame within the strata. Within each stratum all discharges are sorted in the following order on patient-level “control” variables: encrypted hospital ID, diagnosis related group (DRG), admission month, and a random number.

Within each stratum, a number of discharges proportionate to the number of discharges in the universe are selected systematically from the sorted list. For example, if the sampling frame was equal to the universe and 20 percent of the universe was required, then every fifth discharge would be selected from the sorted list of discharges, beginning with a randomly selected start at discharge number 1, 2, 3, 4, or 5 on the list. To ensure a self-weighted sample that has 20 percent *of the universe* within each stratum represented, sampling rates would vary within each stratum, depending on the proportion of the population of discharges covered by the discharges in the sampling frame. Thus, *the sampling rate* would not always be 20 percent within each stratum. For strata that were missing more discharges, the sampling rate would be higher to ensure that the number of sampled discharges would equal 20 percent of the universe. In our study, the overall sample size of 8 million was chosen for conformance with the current NIS design so that sample size could be ruled out as a factor in comparing the performance among the alternative sample designs.

Using this procedure, the sampling rates ensure that the SYS is a self-weighted sample (i.e., discharges will have equal sample weights). The sorting of discharges ensures representativeness on characteristics such as DRG and admission date. This systematic sampling is similar to stratified simple random sampling, but it has the potential to be more efficient if the factors on which the list is ordered are correlated with outcomes of interest such as average length of stay (ALOS), average charges, and mortality rates.

We note that systematic sampling can be vulnerable to periodicities of the discharges being selected. For example, suppose there were two groups, A and B, each with two discharges in the sampling frame, and the two groups of discharges always followed one another in the sorted list of discharges. If every fifth discharge was selected, it would be impossible to select a discharge from both group A and group B into the sample. However, it would be possible to select discharges from both groups using simple random sampling. Thus, these phenomena can *theoretically* lead to a sample unrepresentative of the overall population, making the design potentially less desirable than a nonsystematic sampling design. However, the random ordering of discharges within the other control factors is intended to counteract the effects of periodicities and we concluded that the benefit of a more representative sample outweighed the risk of bias due to any remaining periodicities in the data.

## 4. STATISTICAL METHODS

To evaluate the performance of the NIS and SYS designs, we estimated four outcomes—

1. Total number of discharges
2. Average length of stay (ALOS)
3. In-hospital mortality rate
4. Average total charges for a stay

### 4.1 Accuracy Measurement

A sample design will be considered best for a specific population parameter (e.g., total, mean, or rate) if it generates the most accurate estimate when compared to the true parameter value (for which we derive an estimate described in the next section). An accurate estimate is one that is typically close to the parameter of interest, providing the minimum error (or bias) and the best precision.

Formally, we follow the convention of using the term “accurate” to describe an estimator with low root mean-squared error (RMSE)—the square root of the mean-square error (MSE), which is the mean squared difference between the estimate and the true population value. The MSE can be expressed as bias squared plus variance (the measure of precision), two statistics that measure different aspects of estimate inaccuracy. Therefore, the design with the smallest MSE tends to provide the best tradeoff between bias and variance.

For unbiased estimates the RMSE is equivalent to the standard error. Typically, the half-width of a confidence interval for the outcome statistic is a multiple of the standard error. For example, under normality a 95 percent confidence interval would have a half-width of 1.96 times the standard error. This half-width is called the Margin of Error for the estimated outcome. We will express accuracy in terms of the relative Margin of Error, as explained next.

### 4.2 Comparing Designs on Accuracy

For ease of comparison, a relative margin of error (RME) was obtained by dividing the RMSE for the SYS design by the RMSE of the present NIS design.

$$\text{RME} = \frac{\text{SYS Margin of Error}}{\text{Existing NIS Margin of Error}}$$

Values of RME smaller than 1 mean that the SYS design performed better than the current existing NIS design, whereas RME values greater than 1 indicate the superiority of the existing NIS design over the SYS design. We made comparisons for total national estimates as well as for estimates by age group and by census division. We also made comparisons for all DRGs, but we report only summaries across DRGs overall and separately across medical and surgical DRGs.

### 4.3 Bootstrapping Hospital and Discharge Populations

Nearly all analyses of the NIS employ infinite population inferences, thus our calculation of the MSE should be based on infinite population statistics. Using mortality as an example, most analysts would be concerned with the “long-run” or “underlying” mortality rates at hospitals, not

the observed mortality rates. The concept of a “long-run” or “underlying” statistic is embodied by infinite population inferences in which estimates from small samples usually have relatively large variances.<sup>20</sup>

Consequently, for this study we generated 500 different *populations* using a technique called **bootstrapping**. This technique draws a random sample of H hospitals *with replacement* from the finite universe of H hospitals (represented by all H hospitals in the annual AHA survey). This creates a new population of hospitals. For each new population of hospitals, the technique then draws a random sample of D(h) discharges *with replacement* from the finite population of D(h) discharges at hospital h. This process simulates 500 potential hospital and discharge populations drawn from an infinite universe of possible populations. This infinite universe is sometimes called a “superpopulation.” For each bootstrap population we drew samples according to each of the two designs and we estimated outcomes and calculated errors, as described below.

Using the bootstrap to generate different populations makes sense intuitively. The mix of patients (and their outcomes) at an individual hospital is subject to random influences. For example, local disease outbreaks or natural disasters can have a substantial effect on the mix of conditions a hospital treats during any period. Also, something as simple as the timing of a patient’s admission to the hospital can affect their outcome because of differences in factors such as hospital staffing and the availability of resources at different times of the day on different days of the week and different times of the year.

We performed a stratified version of bootstrapping: hospitals were randomly selected within each hospital stratum and then we bootstrapped discharges within each hospital. The stratified bootstrap keeps the proportion of hospitals in each hospital stratum constant across the 500 bootstrap samples. For example, the number of teaching hospitals was the same in every stratified bootstrap population.

The rationale for the stratified bootstrap is that the mix of hospital types defined by the hospital sampling strata should remain fixed and not randomly vary among the populations drawn from the “superpopulation.” For example, an *unstratified* bootstrap would allow the proportion of rural hospitals to vary from population to population causing discharge types to vary unrealistically at the national level because there are large overall differences between the types of discharges served by rural and urban hospitals. On the other hand, the stratified bootstrap allows the types of discharges to vary realistically within rural hospitals and within urban hospitals.

For each of the 500 bootstrap populations, we sampled discharges according to each of the two sample designs: the existing NIS design and the SYS design.

For each bootstrap population, we estimated the “true” population value of each statistic by weighting the discharges in the full SID, which is a near-census of discharges in the true population to that particular bootstrap population. Consequently, for each population, these weighted SID estimates represent a very good approximation to the “true” bootstrap population value of the statistics for each of the outcomes of interest. The “true” superpopulation value of each statistic was estimated as the average of the 500 bootstrap population “true” values.

---

<sup>20</sup> The variance of a finite population statistic approaches zero as the sample size approaches the population size, regardless of the population size.



We then estimated the MSE for each design as the average squared difference between the 500 sample estimates and the single superpopulation “true” value (the average across all bootstrapped samples) that remained fixed over the 500 samples. This yielded the MSE for infinite population inferences.

## 5. RESULTS

As described earlier, two types of changes were planned for the 2012 NIS. First, the definition of the universe was revised. Second, the sample design switched from the original NIS design to the new NIS design, the systematic sample (SYS).

The modifications to the universe have effects that are independent of the switch from the original NIS design to the SYS design. Both sample designs yield unbiased estimates—regardless of whether we use the old universe definition or the new universe definition—because both samples are weighted to whichever universe definition is in effect.<sup>21</sup> For example, the removal of LTAC hospitals reduces the number of discharges in the universe equally for both sample designs. In section 5.1, we report these global effects.

Last year's report, based on 2010 data for the original universe definition, showed that the switch from the original NIS design to the new SYS design significantly reduced the margin of error for sample estimates. In section 5.2, we report estimated design effects on margins of error using 2011 data and the new universe definition, thus addressing both types of changes.

### 5.1 Effects of Changing the Definition of the Universe

As discussed in an earlier chapter, there are three modifications related to the *universe* of hospitals and discharges:

1. Removed LTAC hospitals. This is expected to reduce the total number of discharges in the universe, especially for older age groups, and to change the case mix (i.e., types of patients seen in the data).
2. Used observed counts of SID discharges in place of AHA survey counts to estimate control totals of discharges in the universe. This affects the NIS sample weights, derived as the ratio of the universe control total (numerator) to the NIS sample size (denominator). The SID counts are used for all HCUP hospitals, and modified AHA counts are used for all hospitals that do not appear in HCUP data.
3. Used SID identifiers rather than AHA identifiers to designate hospital entities.

Table 6 through Table 9 show the incremental effects of these modifications on the following universe statistics:

- Table 6—number of discharges
- Table 7—ALOS
- Table 8—average charges
- Table 9—in-hospital mortality rate

Statistics were also broken out by age groups and census divisions. These values were estimated using 100 percent of the 2011 SID data, representing about 95 percent of all discharges nationwide, weighted up to the universe using 2011 AHA survey data. Consequently, these are very precise finite-population estimates of these statistics for the 2011 universe under the different universe definitions.

---

<sup>21</sup> 500 simulated samples produced estimates statistically equal to the universe values.

For ease of reference, the columns are numbered. There are four column pairs:

- Columns 1 and 2 apply to values under the *original universe definition*.
- Columns 3 and 4 correspond to the *exclusion of LTAC hospitals* from the universe.
- Columns 5 and 6 correspond to the *use of SID discharge counts in addition to the exclusion of LTAC hospitals*.
- Columns 7 and 8 correspond to the *use of SID hospital identifiers in addition to the use of SID discharge counts and the exclusion of LTAC hospitals*.

For each column pair, the first contains the value of the statistic and the second contains the value of the statistic as a percentage of the figure shown in column 1. Therefore, the percentages represent the statistic under the indicated universe definition as a percentage of the statistic under the original universe definition. For example, column 7 of Table 6 shows that, using the completely modified definition of the universe, there were an estimated 36,939,183 discharges nationally for 2011. Column 8 shows that this represents 95.7 percent of the estimated total number of discharges using the original universe definition shown in column 1.

Table 6 contains the results for discharge counts, which are affected by the universe definition. Looking first at the row labeled “U.S.” we see that the removal of LTAC hospitals (columns 3 and 4) resulted in a decrease of 0.7 percent of discharges nationwide from 38,590,733 discharges to 38,338,545 discharges (decreased to 99.3 percent of the original discharge count).

Next, using SID discharge counts in place of AHA discharge counts (columns 5 and 6) resulted in a further decrease of about 3.6 percent, for an overall decrease of 4.3 percent including the removal of LTAC hospitals (decreased to 95.7 percent of the original discharge count).

Finally, using SID hospital identifiers in place of AHA identifiers (columns 7 and 8) resulted in a negligible incremental change (compared with columns 5 and 6) in the total discharge count. Consequently, although the elimination of LTAC hospitals decreased the number of discharges in the universe by 0.7 percent, most of the 4.3 percent overall decrease was caused by the switch from AHA survey counts to SID counts of discharges in the universe.

Based on analyses of Illinois data, there is evidence that the AHA count is higher than the SID count in the aggregate, partly because of the double counting of NICU newborns, but mostly because the AHA counts tend to include long-term care (LTC) and swing bed admissions, which may not be included in the SID counts, depending on the state.

Using supplemental 2010 and 2011 data from the Illinois Department of Public Health (DOPH), we confirmed that the AHA survey count for Illinois included LTC and swing bed admissions, whereas their HCUP SID data did not. The SID discharge counts agreed with counts from the Health Department data *after* eliminating the double-counting of newborns in NICUs and *after* eliminating long term care and swing bed admissions (see Appendix A for details of this analysis).

For HCUP SID data more generally, it is likely that some hospitals include LTC and swing bed admissions in their SID data. Likewise, some hospitals (such as those in Illinois) probably include these discharges in their AHA survey responses.

**Table 6. Incremental Impact of Changes to the Universe on Universe Discharge Counts, 2011.**

	<i>Old Universe Definition (1998–2011)</i>		Impact of Incremental Modifications to the Universe					
			Exclude LTAC Hospitals					
			Use AHA Discharge Counts		Use SID Discharge Counts†			
			Use AHA Hospital ID		Use AHA Hospital ID		New Universe Definition Use SID Hospital ID	
			Total Discharges	% of Original Discharges	Total Discharges	% of Original Discharges	Total Discharges	% of Original Discharges
Column Number	1	2	3	4	5	6	7	8
<b>U.S.</b>	38,590,733	100.0	38,338,545	99.3	36,935,306	95.7	36,939,183	95.7
<b>New England</b>	1,816,085	100.0	1,802,470	99.3	1,736,605	95.6	1,736,605	95.6
<b>Middle Atlantic</b>	5,712,173	100.0	5,670,498	99.3	5,387,554	94.3	5,387,984	94.3
<b>East North Central</b>	6,047,665	100.0	6,003,154	99.3	5,822,669	96.3	5,822,669	96.3
<b>West North Central</b>	2,721,135	100.0	2,713,288	99.7	2,557,759	94.0	2,557,759	94.0
<b>South Atlantic</b>	7,630,673	100.0	7,598,619	99.6	7,349,295	96.3	7,349,542	96.3
<b>East South Central</b>	2,594,411	100.0	2,576,922	99.3	2,489,063	95.9	2,489,063	95.9
<b>West South Central</b>	4,577,845	100.0	4,510,425	98.5	4,282,943	93.6	4,285,988	93.6
<b>Mountain</b>	2,370,201	100.0	2,353,402	99.3	2,303,074	97.2	2,303,227	97.2
<b>Pacific</b>	5,120,545	100.0	5,109,767	99.8	5,006,344	97.8	5,006,344	97.8
<b>Age Missing</b>	5,985	100.0	5,934	99.1	5,696	95.2	5,697	95.2
<b>Age 0–17</b>	6,096,152	100.0	6,080,673	99.7	5,859,144	96.1	5,861,730	96.2
<b>Age 18–44</b>	9,502,108	100.0	9,462,878	99.6	9,121,651	96.0	9,123,630	96.0
<b>Age 45–64</b>	9,571,581	100.0	9,503,456	99.3	9,158,076	95.7	9,159,189	95.7
<b>Age 65+</b>	13,414,907	100.0	13,285,604	99.0	12,790,738	95.3	12,788,936	95.3

†When discharge counts or hospital identifiers are not available from the SID, estimates from the AHA will be used. This is expected to affect fewer than 10 percent of hospitals.

Abbreviations: AHA, American Hospital Association; ID, identification number; LTAC, long-term acute care; SID, State Inpatient Databases

Unfortunately, there is no way to consistently identify hospitals that include LTC and swing bed discharges in the SID. Further, it is rare to find survey data such as the Illinois DOPH survey that is independent of both the SID and the AHA survey and that contains separate counts for NICU newborns, LTC admissions, and swing bed admissions. Thus, it was not possible to perform analyses using data from multiple States.

Nevertheless, in 2011 the Illinois SID count was 95.9 percent of the AHA count, which is very close to the 95.7 percent figure for the United States as a whole (shown in column 8 of Table 6). Figure 4 shows the SID count as a percentage of the AHA count for each HCUP state for facilities that could be matched between the SID and the AHA. As shown in Figure 4, in 2011 the HCUP SID count fell short of the AHA count for all but three States. Therefore, we speculate that the Illinois mismatch between the AHA count and the SID count is often repeated in other HCUP States, with the result that the AHA count includes a class of discharges that is not generally present in the SID data. We concluded that LTC and swing bed discharges should be “removed” from the universe control total—the sample weight numerator—because these discharges are probably not well represented in the sample data. Therefore, in addition to the other reasons listed in section 1.4.3, we switched to using the SID count to effectively accomplish this removal.

Returning to Table 6, we note that the percentages in column 8 vary moderately across census divisions, ranging from 93.6 percent to 97.8 percent, and vary slightly across age groups, ranging from 95.2 percent to 96.2 percent. Part of the variation is explained by the varying impact of removing LTAC hospitals. For example, in the West South Central region there was a 1.5 percent decrease attributable to the removal of LTAC hospitals (column 4), compared with a 0.7 percent decrease overall. Likewise, the impact of LTAC hospitals was greater for the older age groups compared with the younger age groups, which is consistent with the demographics of LTAC patients.

Table 7 shows the impact of the universe definitions on ALOS. The same column pairs appear in this table as in Table 6. The percentages represent the ALOS under the specific universe definition, compared with the ALOS under the original universe definition shown in column 1. For ALOS, the elimination of LTAC hospitals had the greatest impact and the use of SID discharge counts and SID hospital identifiers had very little additional impact. ALOS tended to be higher for patients in LTAC hospitals compared with patients in non-LTAC hospitals. Consequently, removal of LTAC hospitals caused the ALOS to decrease by about 1.5 percent overall (column 4). Again, consistent with the demographics of patients in LTAC hospitals, the overall decrease was greatest for the oldest age groups.

Table 8 shows the impact of the universe definitions on average hospital charges. The pattern here was very similar to the pattern in Table 7 for ALOS. In particular, there was a nationwide decrease of about 0.7 percent (U.S. in column 4) in average charges, because average charges for patients in LTAC hospitals tended to be higher than those for patients in non-LTAC hospitals, and the impact is greater for the older age groups. This culminated in a 1.0 percent reduction for the oldest age group (age 65+ in column 4). Again, use of SID discharge counts and SID hospital identifiers had negligible effects after accounting for the effect of LTAC hospitals.

**Figure 4: SID Percentage of AHA Discharge Count, by State, 2011**

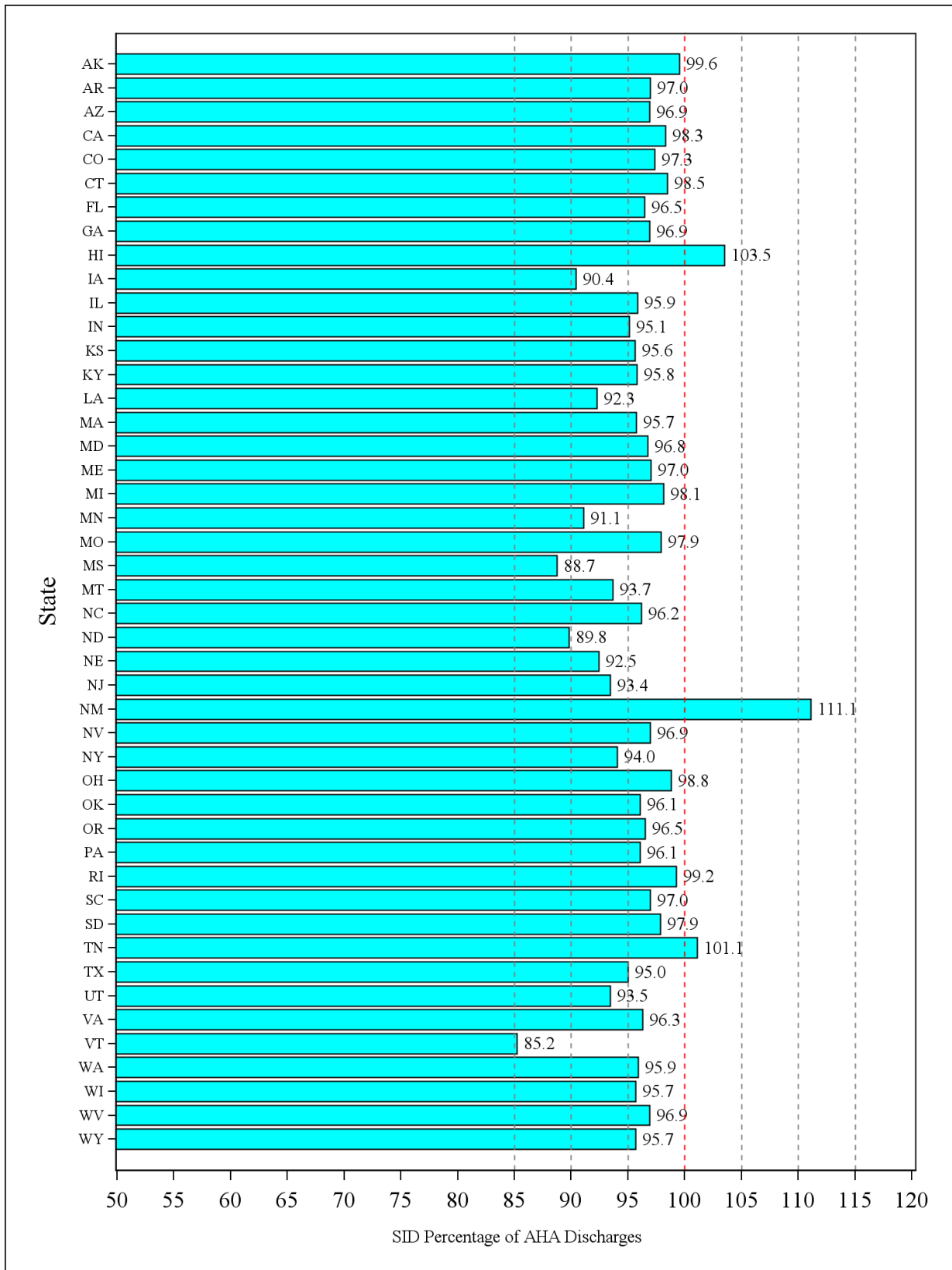


Table 9 shows the impact of the universe definitions on in-hospital mortality rates. The pattern for mortality mirrored that for ALOS and charges. The exclusion of LTAC hospitals accounted for virtually all of the mortality rate decreases. Overall, the mortality proportion decreased by 2 percent (column 8 for the U.S. as a whole), from .01905 to .01866, and the decrease was greatest for the oldest age groups.

In summary, the modifications to the universe definitions will result in one-time overall national shifts of about 4.3 percent downward for the discharge count, 1.5 percent downward for ALOS, 0.5 percent downward for average charges, and 2.0 percent downward for in-hospital mortality. These downward shifts will be evident in overall NIS trends. These shifts will have different magnitudes for different subsets of the NIS and for different diagnostic categories. For example, the shifts for most outcomes will be greater for older patients than they will be for younger patients. In turn, the shifts will tend to be greater for conditions (and their treatments) associated with higher proportions of older patients. Therefore, analysts will need to take extra care in interpreting trends estimated from the NIS that cross the 2012 data year. We address this further in our conclusions at the end of this report.

**Table 7. Incremental Impact of Changes to the Universe on Universe Average Length of Stay (ALOS), 2011**

	<i>Old Universe Definition</i>		Impact of Incremental Modifications to the Universe					
			Exclude LTAC Hospitals					
			Use AHA Discharge Counts		Use SID Discharge Counts*			
			Use AHA Hospital ID		Use AHA Hospital ID		<i>New Universe Definition</i> Use SID Hospital ID	
ALOS	% of Original ALOS	ALOS	% of Original ALOS	ALOS	% of Original ALOS	ALOS	% of Original ALOS	
<b>Column Number</b>	1	2	3	4	5	6	7	8
<b>U.S.</b>	4.59	100.0	4.53	98.5	4.52	98.5	4.53	98.5
<b>New England</b>	4.56	100.0	4.56	100.1	4.57	100.3	4.57	100.3
<b>Middle Atlantic</b>	5.13	100.0	5.07	98.8	5.07	98.8	5.07	98.8
<b>East North Central</b>	4.45	100.0	4.40	98.7	4.40	98.8	4.40	98.8
<b>West North Central</b>	4.28	100.0	4.26	99.6	4.26	99.6	4.26	99.6
<b>South Atlantic</b>	4.61	100.0	4.56	99.0	4.57	99.0	4.57	99.0
<b>East South Central</b>	4.70	100.0	4.65	98.9	4.65	99.0	4.66	99.3
<b>West South Central</b>	4.74	100.0	4.51	95.2	4.51	95.1	4.51	95.1
<b>Mountain</b>	4.10	100.0	4.03	98.3	4.01	98.0	4.01	98.0
<b>Pacific</b>	4.36	100.0	4.33	99.2	4.33	99.2	4.33	99.2
<b>Age Missing</b>	5.21	100.0	5.17	99.2	5.17	99.2	5.17	99.2
<b>Age 0-17</b>	3.82	100.0	3.82	100.1	3.82	100.0	3.82	100.1
<b>Age 18-44</b>	3.63	100.0	3.61	99.5	3.61	99.4	3.61	99.4
<b>Age 45-64</b>	4.97	100.0	4.89	98.4	4.89	98.4	4.89	98.4
<b>Age 65 +</b>	5.36	100.0	5.24	97.7	5.24	97.7	5.24	97.8

\* When discharge counts or hospital identifiers are not available from the SID, estimates from the AHA will be used. This is expected to affect fewer than 10 percent of hospitals.

Abbreviations: AHA, American Hospital Association; ID, identification number; LTAC, long-term acute care; SID, State Inpatient Databases



**Table 8. Incremental Impact of Changes to the Universe on Universe Average Total Charges, 2011**

	<i>Old Universe Definition</i>		Impact of Incremental Modifications to the Universe					
			Exclude LTAC Hospitals					
			Use AHA Discharge Counts		Use SID Discharge Counts*			
			Use AHA Hospital ID		Use AHA Hospital ID		<i>New Universe Definition</i> Use SID Hospital ID	
			Average Charges U.S. \$	% of Original Average Charges	Average Charges U.S. \$	% of Original Average Charges	Average Charges U.S. \$	% of Original Average Charges
Column Number	1	2	3	4	5	6	7	8
<b>U.S.</b>	34,962	100.0	34,711	99.3	34,779	99.5	34,790	99.5
<b>New England</b>	25,498	100.0	25,569	100.3	25,730	100.9	25,731	100.9
<b>Middle Atlantic</b>	40,513	100.0	40,343	99.6	40,378	99.7	40,377	99.7
<b>East North Central</b>	29,470	100.0	29,295	99.4	29,317	99.5	29,317	99.5
<b>West North Central</b>	27,032	100.0	26,985	99.8	27,096	100.2	27,099	100.2
<b>South Atlantic</b>	32,187	100.0	31,979	99.4	32,031	99.5	32,051	99.6
<b>East South Central</b>	28,828	100.0	28,631	99.3	28,778	99.8	28,852	100.1
<b>West South Central</b>	35,597	100.0	34,649	97.3	34,662	97.4	34,666	97.4
<b>Mountain</b>	35,183	100.0	34,981	99.4	34,948	99.3	34,951	99.3
<b>Pacific</b>	50,462	100.0	50,279	99.6	50,282	99.6	50,288	99.7
<b>Age Missing</b>	44,856	100.0	44,308	98.8	44,345	98.9	44,350	98.9
<b>Age 0–17</b>	19,446	100.0	19,476	100.2	19,476	100.2	19,491	100.2
<b>Age 18–44</b>	25,458	100.0	25,398	99.8	25,433	99.9	25,434	99.9
<b>Age 45–64</b>	43,767	100.0	43,496	99.4	43,575	99.6	43,590	99.6
<b>Age 65+</b>	42,431	100.0	42,001	99.0	42,124	99.3	42,142	99.3

\* When discharge counts or hospital identifiers are not available from the SID, estimates from the AHA will be used. This is expected to affect fewer than 10 percent of hospitals.  
 Abbreviations: AHA, American Hospital Association; ID, identification number; LTAC, long-term acute care; SID, State Inpatient Databases

**Table 9. Incremental Impact of Changes to the Universe on Universe In-Hospital Mortality Rates, 2011**

	<i>Old Universe Definition</i>		Impact of Incremental Modifications to the Universe					
			Exclude LTAC Hospitals					
			Use AHA Discharge Counts		Use SID Discharge Counts*			
			Use AHA Hospital ID		Use AHA Hospital ID		<i>New Universe Definition</i> Use SID Hospital ID	
	Mortality Rate	% of Original Mortality Rate	Mortality Rate	% of Original Mortality Rate	Mortality Rate	% of Original Mortality Rate	Mortality Rate	% of Original Mortality Rate
<b>Column Number</b>	1	2	3	4	5	6	7	8
<b>U.S.</b>	0.01905	100.0	0.01867	98.0	0.01866	97.9	0.01866	98.0
<b>New England</b>	0.02075	100.0	0.02075	100.0	0.02073	99.9	0.02073	99.9
<b>Middle Atlantic</b>	0.02060	100.0	0.01987	96.5	0.01988	96.5	0.01987	96.5
<b>East North Central</b>	0.01727	100.0	0.01706	98.8	0.01707	98.8	0.01707	98.8
<b>West North Central</b>	0.01761	100.0	0.01754	99.6	0.01752	99.5	0.01752	99.5
<b>South Atlantic</b>	0.01913	100.0	0.01882	98.4	0.01883	98.5	0.01883	98.4
<b>East South Central</b>	0.02230	100.0	0.02199	98.6	0.02198	98.6	0.02210	99.1
<b>West South Central</b>	0.01921	100.0	0.01818	94.6	0.01816	94.5	0.01816	94.5
<b>Mountain</b>	0.01462	100.0	0.01446	98.9	0.01440	98.5	0.01440	98.5
<b>Pacific</b>	0.01975	100.0	0.01954	99.0	0.01952	98.9	0.01952	98.9
<b>Age Missing</b>	0.02309	100.0	0.02230	96.6	0.02229	96.5	0.02226	96.4
<b>Age 0-17</b>	0.00360	100.0	0.00360	100.1	0.00360	100.1	0.00361	100.2
<b>Age 18-44</b>	0.00386	100.0	0.00383	99.3	0.00384	99.3	0.00384	99.4
<b>Age 45-64</b>	0.01729	100.0	0.01704	98.6	0.01704	98.6	0.01706	98.7
<b>Age 65 +</b>	0.03809	100.0	0.03729	97.9	0.03728	97.9	0.03729	97.9

\* When discharge counts or hospital identifiers are not available from the SID, estimates from the AHA will be used. This is expected to affect fewer than 10 percent of hospitals.

Abbreviations: AHA, American Hospital Association; ID, identification number; LTAC, long-term acute care; SID, State Inpatient Databases

## 5.2 Effects of Sample Design Changes

Last year, we compared three alternative NIS sample designs by calculating several statistics using 2010 data and concluded that the systematic (SYS) design was preferable because it resulted in substantial decreases in the margin of error for estimates; hence, SYS-generated estimates had greater precision. Consequently, for this year's analysis (presented in this report), we compared only the original NIS design to the SYS design using 2011 data. The main reason for this comparison was to ensure that the modifications to the universe described in section 5.1 had no serious effects on the reductions in the margins of error previously estimated for the SYS design compared with the original NIS design.

As shown in section 5.1, the modifications to the universe resulted in a significant reduction in the total number of discharges in the universe and resulted in smaller changes for national estimates of ALOS, total charges, and hospital mortality using 2011 data. Therefore, modifications to the universe will cause shifts in the levels of sample estimates for totals, means, and rates, which would occur regardless of the sample design. The analyses in this section will assess the impact of modifying the definition of the universe on *sampling error*.

We measured the difference in sampling error between the two designs (original NIS versus SYS) by the relative margin of error (RME). The RME expresses the margin of error of the estimated outcome under the SYS design as a multiple of the margin of error for the estimated outcome under the original NIS design. Therefore, RME values less than 1.0 indicate that the SYS design produces estimates with lower sampling error compared with the original NIS design. The RME values in this report used 2011 data to estimate values for the new universe definition. As we will show, the values based on the new universe definition are very close to the RME values in last year's report, which were based on 2010 data used to estimate values for the old universe.<sup>22</sup> Consequently, in the new universe, the SYS design continues to enjoy the originally estimated reductions in sampling error.

We calculated the RME for national estimates overall, by age group, and by census division. In addition, RME was calculated by DRG, but rather than report the statistics for each of the 752<sup>23</sup> DRGs individually, we use box plots and scatter plots to summarize the distribution of RME across all DRGs and separately summarize the medical DRGs and surgical DRGs. We estimated the RME corresponding to each incremental change in the universe definition—

1. Elimination of LTAC hospitals
2. Use of SID estimates rather than AHA estimates for the count of discharges in the universe<sup>24</sup>
3. Use of SID identifiers rather than AHA identifiers to define hospitals in the universe<sup>25</sup>

---

<sup>22</sup> In last year's report, the RME was labeled RRMSE (relative root mean squared error).

<sup>23</sup> For calendar year 2011, the data combined DRG version 28 (effective 10/1/2010 with 747 DRGs) and version 29 (effective 10/1/2011 with 751 DRGs). One DRG (number 15) in version 28 was replaced by two DRGs (numbers 16 and 17) in version 29, resulting in 752 different DRGs.

<sup>24</sup> SID counts are used for HCUP hospitals; modified AHA counts are used for non-HCUP hospitals.

<sup>25</sup> SID identifiers are used for HCUP hospitals; AHA identifiers are used for non-HCUP hospitals.

The results in this section are based on the stratified bootstrap algorithm described in the methods section. As explained in the methods section, these statistics are calculated from a **superpopulation perspective**,<sup>26</sup> which is consistent with most uses of the NIS. Consequently, the RME values are *not* adjusted by finite population correction factors.

### 5.2.1 Overall Results

The RME values for national estimates are shown in Table 10. The columns are numbered for easy reference. Columns 1 and 2 contain the RME values using 2010 data and 2011 data, respectively, under the old universe definition. The differences between columns 1 and 2 are caused solely from using data from two different years. The remaining columns are all based on 2011 data, and each succeeding column corresponds to the RME values corresponding to an incremental change in the universe, based on column 2. Column 3 contains the RME values when LTAC hospitals are excluded from the old universe. Column 4 contains RME values when LTAC hospitals are excluded *and* SID discharge counts are used in place of AHA discharge counts to estimate sample weights. Finally, column 5 contains RME values when *all modifications* are in effect, including the use of SID hospital identifiers in place of AHA hospital identifiers to designate separate hospital entities. Therefore, the values in column 5 represent our best estimate of the effect of the SYS design on the relative margins of error that can be expected under the new universe definition.

**Table 10. Relative Margin of Error (RME) for National Estimates, Overall**

	<i>Old Universe Definition</i>		Impact of Incremental Modifications to the Universe, 2011 Data		
	2010 Data	2011 Data	Exclude LTAC Hospitals		
			Use AHA Discharge Counts	Use SID Discharge Counts*	
			Use AHA Hospital ID	Use AHA Hospital ID	New Universe Definition Use SID Hospital ID (Final New NIS Design)
Column #	1	2	3	4	5
Discharges	1.00	1.00	1.00	1.00	1.00
ALOS	0.54	0.53	0.52	0.52	0.53
Average charges	0.56	0.55	0.58	0.57	0.55
Mortality	0.53	0.57	0.55	0.55	0.51

\* When discharge counts or hospital identifiers are not available from the SID, estimates from the AHA will be used. This is expected to affect fewer than 10 percent of hospitals.

Abbreviations: AHA, American Hospital Association; ID, identification number; LTAC, long-term acute care; SID, State Inpatient Databases

<sup>26</sup> The superpopulation perspective treats the population as infinite, resulting in larger sample variances compared with the finite population perspective. Most NIS studies are concerned with “long run” rates and averages.

For each outcome, the RME values differ little across the columns. Consequently, at the national level, the RMEs were unaffected by changes to the universe definition.

By design, all samples were weighted so that the sum of the weights equaled the national population of discharges calculated for the universe. Thus, at the national level and across all discharges, the estimated discharge totals were equal for both the SYS and the original NIS design. This caused all of the RMEs to equal 1 for this particular outcome at the national level.

On the other outcomes, the SYS design outperformed the original NIS design by a substantial margin. The RME can be interpreted as the ratio of the width of a confidence interval estimated under the SYS design to that estimated under the original NIS design. For example, the width of a confidence interval for ALOS estimated from a sample under the SYS design was about one-half (53 percent) as wide as the width of a confidence interval for ALOS estimated under the original NIS design.

The superior performance of the SYS is not surprising, because patient characteristics and mean outcomes vary significantly among hospitals. Variation in mean outcomes such as ALOS, charges, and mortality rates for discharges among hospitals causes a net loss of information in a design that draws a sample of hospitals, compared with a design that draws the same total number of discharges across the entire spectrum of hospitals participating in HCUP. As a result, even when stratified by hospital characteristics, there can be considerable variation in mean outcomes estimated from one hospital sample to the next, depending on which hospitals are selected for the sample. The SYS sample strategy, which selects a sample of discharges from all hospitals, better represents the entire universe of hospitals and increases the information in the total sample of discharges. This produces more accurate and more consistent sample estimates.

### 5.2.2 Results by Age Group

Table 11 contains the estimates of RME at the national level for four age groups. Similar to the overall results, the RME estimates indicated better performances for the SYS design compared with the original NIS design. There is little difference in the RME across columns, which indicates that the new universe has not compromised the substantial improvements estimated last year for the SYS design.

Column 5 contains the RMEs for the redesign based on the new universe definition. The RME for total discharges ranged between 0.56 and 0.76, which is well below 1.0 for all age groups. The RME for the youngest age group (0.56) was substantially lower than the RMEs for the older age groups (0.71–0.76). This is likely because discharges from children's hospitals, whose patients are all in the youngest age group, are sampled uniformly by the SYS design. In contrast, the existing NIS design includes some children's hospitals and excludes others. This would lead to more variability in discharge estimates using the existing design, resulting in a bigger improvement under the SYS design for the youngest age group compared with the older age groups. The RMEs for the other outcomes are even lower, ranging between 0.50 and 0.56 across age groups. The low RMEs for the 0–17 age group raise questions about the need for a nationwide Kids' Inpatient Database (KID) after the NIS redesign is implemented; however, this will be evaluated in the future after the production of the KID using 2012 data (the next scheduled release of the KID).

### 5.2.3 Results by Census Division

The RMEs for each census division are reported in Table 12. The SYS design outperformed the original NIS design by a wide margin in every division. Again, there was little difference in RME values across the columns 2 through 5, which means that the changes to the universe had little impact on the RME values originally estimated for the SYS design. Differences between columns 1 and 2 were driven solely by sampling variability and by differences between the 2010 and 2011 data.<sup>27</sup>

**Table 11. Relative Margin of Error (RME) for National Estimates, By Age Group**

Outcome	Age Group Column #	Old Universe Definition		Impact of Incremental Modifications to the Universe, 2011 Data		
		2010 Data 1	2011 Data 2	Exclude LTAC Hospitals		
				Use AHA Discharge Counts 3	Use SID Discharge Counts*	
				Use AHA Hospital ID 4	Use AHA Hospital ID 5	New Universe Definition Use SID Hospital ID
Discharges	0–17	0.60	0.61	0.58	0.58	0.56
	18–44	0.78	0.83	0.76	0.77	0.76
	45–64	0.76	0.74	0.74	0.76	0.71
	65+	0.68	0.74	0.75	0.76	0.71
ALOS	0–17	0.50	0.54	0.51	0.51	0.52
	18–44	0.53	0.51	0.50	0.50	0.50
	45–64	0.57	0.53	0.51	0.50	0.52
	65+	0.53	0.54	0.55	0.57	0.55
Charges	0–17	0.49	0.52	0.53	0.53	0.52
	18–44	0.56	0.54	0.57	0.57	0.53
	45–64	0.59	0.55	0.56	0.55	0.55
	65+	0.56	0.56	0.57	0.57	0.56
Mortality	0–17	0.52	0.53	0.55	0.53	0.56
	18–44	0.57	0.55	0.55	0.55	0.55
	45–64	0.55	0.60	0.57	0.57	0.56
	65+	0.51	0.57	0.56	0.55	0.56

\* When discharge counts or hospital identifiers are not available from the SID, estimates from the AHA will be used. This is expected to affect fewer than 10 percent of hospitals.

Abbreviations: AHA, American Hospital Association; ALOS, average length of stay; ID, identification number; LTAC, long-term acute care; SID, State Inpatient Databases

<sup>27</sup> One state, North Dakota, was added to HCUP in 2011.

**Table 12. Relative Margin of Error (RME) for National Estimates, By Census Division**

Outcome	Census Division	Old Universe Definition		Impact of Incremental Modifications to the Universe, 2011 Data		
		2010 Data	2011 Data	Exclude LTAC Hospitals		
				Use AHA Discharge Counts	Use SID Discharge Counts*	
				Use AHA Hospital ID	Use AHA Hospital ID	New Universe Definition Use SID Hospital ID
Column #	1	2	3	4	5	
Discharges	New England	0.37	0.37	0.40	0.40	0.36
	Middle Atlantic	0.76	0.67	0.70	0.67	0.55
	East North Central	0.43	0.54	0.51	0.56	0.53
	West North Central	0.31	0.37	0.36	0.40	0.40
	South Atlantic	0.22	0.40	0.45	0.48	0.34
	East South Central	0.10	0.15	0.14	0.15	0.14
	West South Central	0.33	0.38	0.34	0.31	0.28
	Mountain	0.41	0.43	0.39	0.42	0.45
	Pacific	0.56	0.53	0.55	0.57	0.55
ALOS	New England	0.48	0.46	0.47	0.48	0.48
	Middle Atlantic	0.56	0.57	0.53	0.54	0.52
	East North Central	0.56	0.52	0.57	0.57	0.51
	West North Central	0.54	0.50	0.52	0.51	0.48
	South Atlantic	0.58	0.54	0.51	0.51	0.52
	East South Central	0.52	0.57	0.50	0.51	0.50
	West South Central	0.53	0.53	0.56	0.55	0.45
	Mountain	0.51	0.53	0.47	0.52	0.56
	Pacific	0.54	0.49	0.53	0.53	0.51
Charges	New England	0.49	0.48	0.47	0.48	0.47
	Middle Atlantic	0.58	0.62	0.56	0.56	0.52
	East North Central	0.57	0.54	0.58	0.58	0.55
	West North Central	0.57	0.53	0.51	0.51	0.43
	South Atlantic	0.69	0.63	0.59	0.59	0.58
	East South Central	0.47	0.52	0.52	0.52	0.53
	West South Central	0.57	0.53	0.51	0.51	0.51
	Mountain	0.50	0.52	0.52	0.52	0.52
	Pacific	0.57	0.53	0.53	0.53	0.56
Mortality	New England	0.55	0.51	0.52	0.51	0.51
	Middle Atlantic	0.48	0.52	0.52	0.52	0.52
	East North Central	0.53	0.53	0.53	0.53	0.53
	West North Central	0.58	0.53	0.54	0.54	0.55
	South Atlantic	0.60	0.63	0.59	0.59	0.55
	East South Central	0.52	0.56	0.55	0.57	0.53
	West South Central	0.51	0.56	0.58	0.57	0.51
	Mountain	0.54	0.55	0.53	0.52	0.53
	Pacific	0.57	0.55	0.51	0.51	0.51

\* When discharge counts or hospital identifiers are not available from the SID, estimates from the AHA will be used. This is expected to affect fewer than 10 percent of hospitals.

Abbreviations: AHA, American Hospital Association; ALOS, average length of stay; ID, identification number; LTAC, long-term acute care; SID, State Inpatient Databases

As previously noted, by design, the RME for discharges was always equal to 1.0 at the national level. However, that is not the case at the census division level. Under the SYS design, the sample weights ensure that every sample estimate is equal to the universe value *for each of the nine census divisions*. Under the original NIS design, the sample weights ensure that every sample estimate is equal to the universe value *for each of the four census regions*. Therefore, at the census division level, samples under the SYS design will always estimate the same number of discharges in the universe, but samples under the original NIS design will estimate different numbers of discharges in the universe (depending on the proportion of discharges sampled from each census division within each census region). Therefore, the improvements in discharge count estimates per census division are a reflection of the different geographic stratifiers used for the two designs.

The RME values for the other outcomes are in line with the overall RMEs shown earlier (see Table 10), ranging from 0.43 to 0.58. These represent dramatic reductions in sampling error under the new SYS design.

#### 5.2.4 Results for DRG-Specific Estimates

We summarize the distribution of DRG-specific RME estimates with box plots. An important consideration in reviewing these results is that the sample sizes vary substantially across the 752 DRGs in the data, unlike the previous estimates that were based on very large samples. Consequently, RME estimates vary across DRGs in part because of the varying sample sizes. We present distributions of RME for all DRGs, by DRGs within age groups, and by DRGs within census divisions.

We depict data in a series of figures with one set of boxes, grouped for each outcome (total discharges, ALOS, average charges, and in-hospital mortality). In addition, there is one set of boxes for each incremental change to the universe definition, shown in different colors in the following figures.

See Figure 5 which displays the distributions by DRG, as an example. The vertical axis represents the RME. The white dot in each box represents the mean RME taken over all 752 DRGs. The horizontal line in the middle of each box represents the median. The top of each box represents the 75<sup>th</sup> percentile and the bottom of each box represents the 25<sup>th</sup> percentile. Therefore, 50 percent of all DRGs have RME values that range from the bottom to the top of each box. The vertical lines—whiskers—that emanate from the bottom and top of each box terminate at the minimum and maximum RME values, respectively. These distributions are not weighted for the number of discharges in each DRG. Small DRGs have just as much weight as large DRGs in Figure 5, and they often represent the extremes.

##### 5.2.4.1 DRG Results Overall

As shown in Figure 5, the distribution of RME values showed very little variation across the universe definitions. Consequently, the reductions in relative error did not depend on our redefinitions of the universe. In addition, the SYS design substantially reduced the margin of error for nearly all DRGs for ALOS, discharges, and average charges because the distributions completely fell below a value of 1.0 for those outcomes. For mortality, the upper whisker reached 1. This occurred because some DRGs have observed mortality rates of zero or one in the HCUP data (that is, no patients in that DRG died in the hospital, or all patients in that DRG died) and the sample estimates will always be zero or one for either design. However, improvements in the margin of error tend to be substantial for DRGs in which the mortality rate is between zero and one.



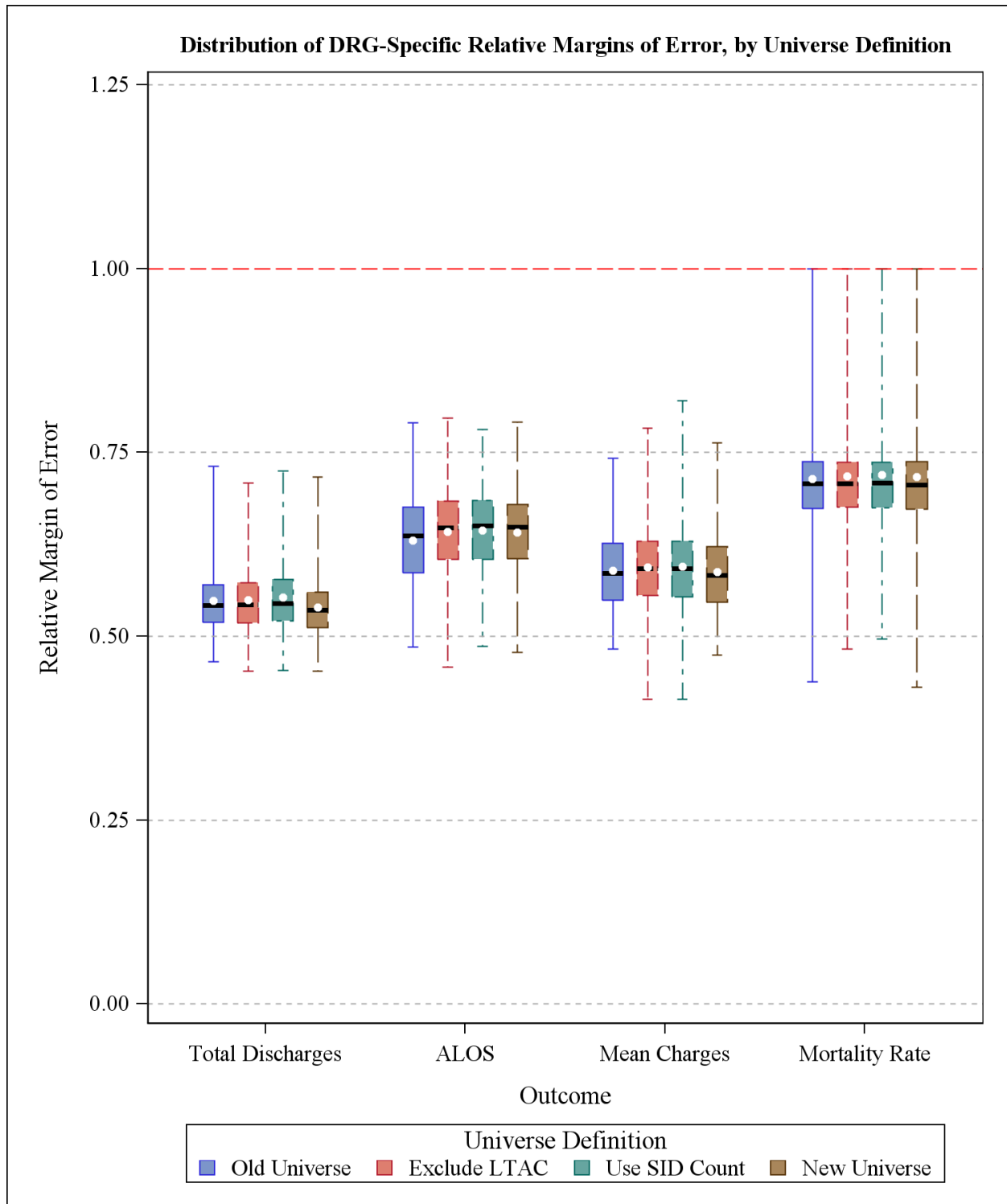
#### 5.2.4.2 DRG Results by Age Group

Figure 6, Figure 7, Figure 8, and Figure 9 show the distributions of RME values that are specific to each age group for total discharges, ALOS, average charges, and mortality rates, respectively. Again, the universe definitions had little impact, and the SYS design consistently outperformed the original NIS design. For mortality (Figure 9), the fact that the tops of the boxes align with 1.0 with a few “outliers” above 1.0 for the younger age groups is, again, the result of very low and very high mortality DRGs, which have very little mortality variance. Therefore, there is very little opportunity for any design to outperform another design. However, for the older age groups, the SYS design exhibits substantial gains.

#### 5.2.4.3 DRG Results by Census Division

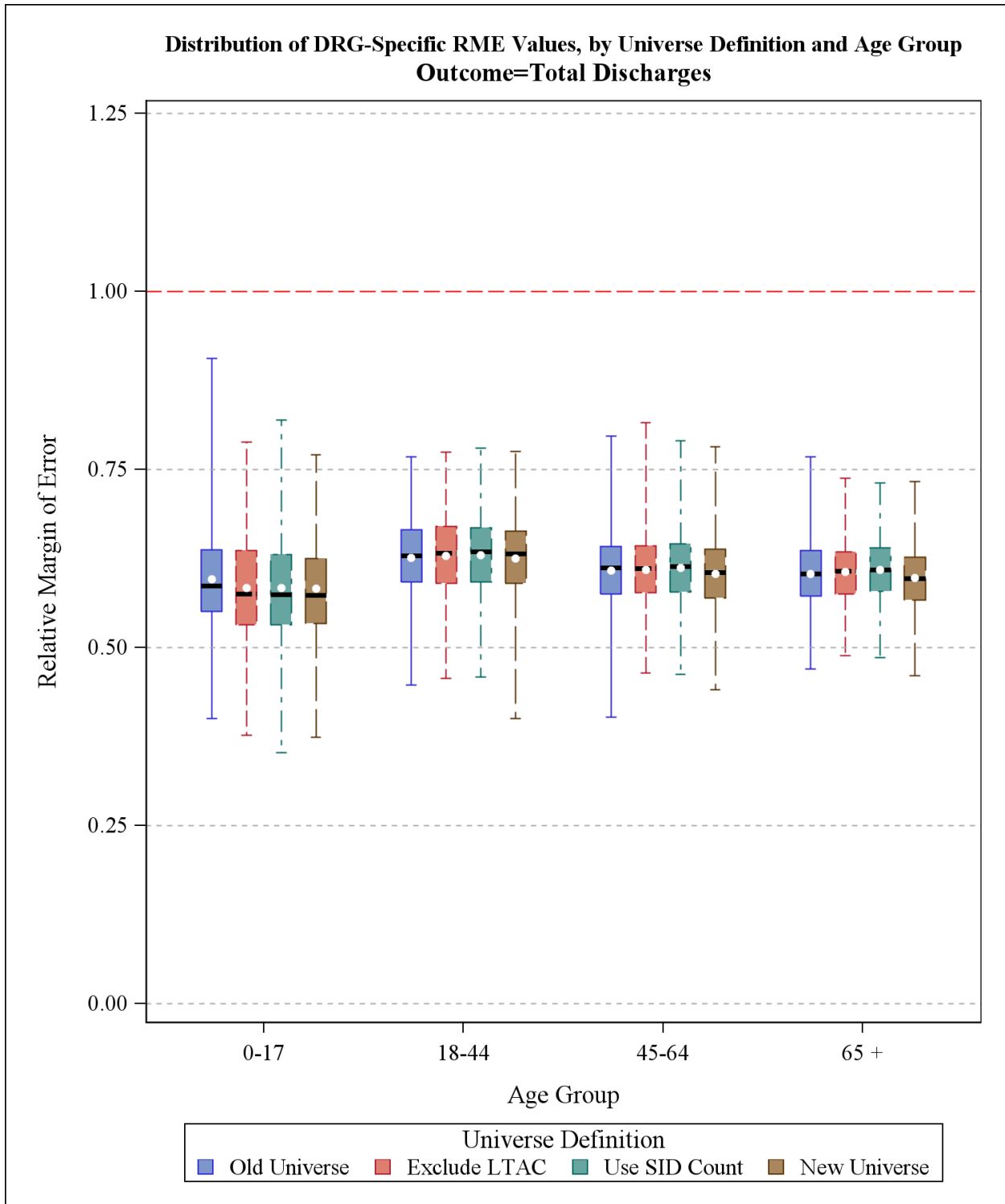
Figure 10 shows the distributions of RME values that are specific to each census division for total discharges, ALOS, average charges, and mortality rates, respectively. This figure only shows the results for the final universe definition, not incremental changes; the effects of the universe definitions were negligible (data not shown). Again, the SYS design consistently outperformed the original NIS design at the DRG level across regions. Although the RME values exceeded 1.0 in some regions, it was for a very small number of DRGs that tended to have low discharge counts.

**Figure 5: Distribution of Diagnostic Related Group (DRG)-Specific Estimates of Relative Margin of Error, Overall**



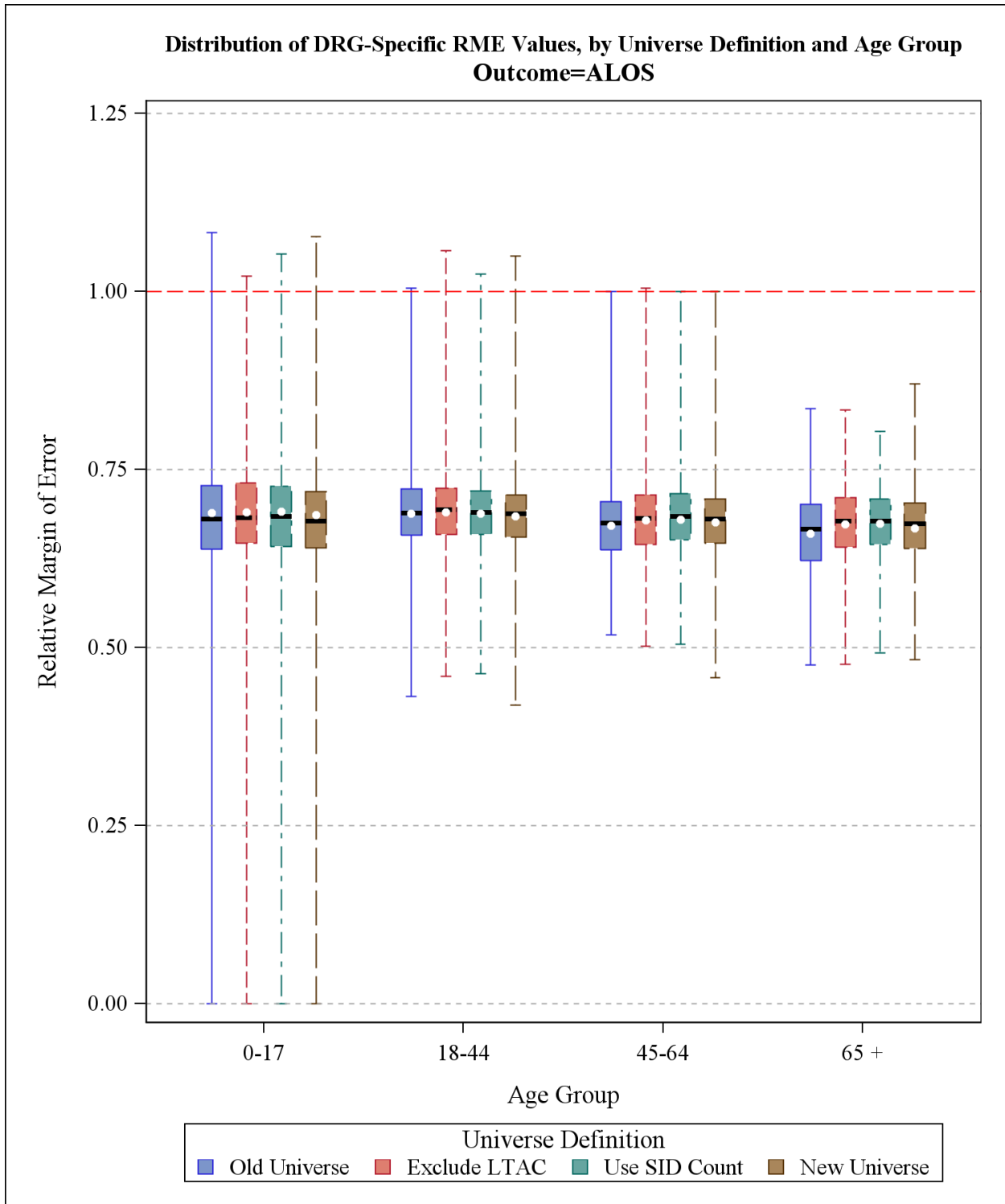
Abbreviations: LTAC, long-term acute care; SID, State Inpatient Databases

**Figure 6: Distribution of Diagnosis Related Group (DRG)-Specific Estimates of Relative Margin of Error (RME) for Total Discharges, by Age Groups**



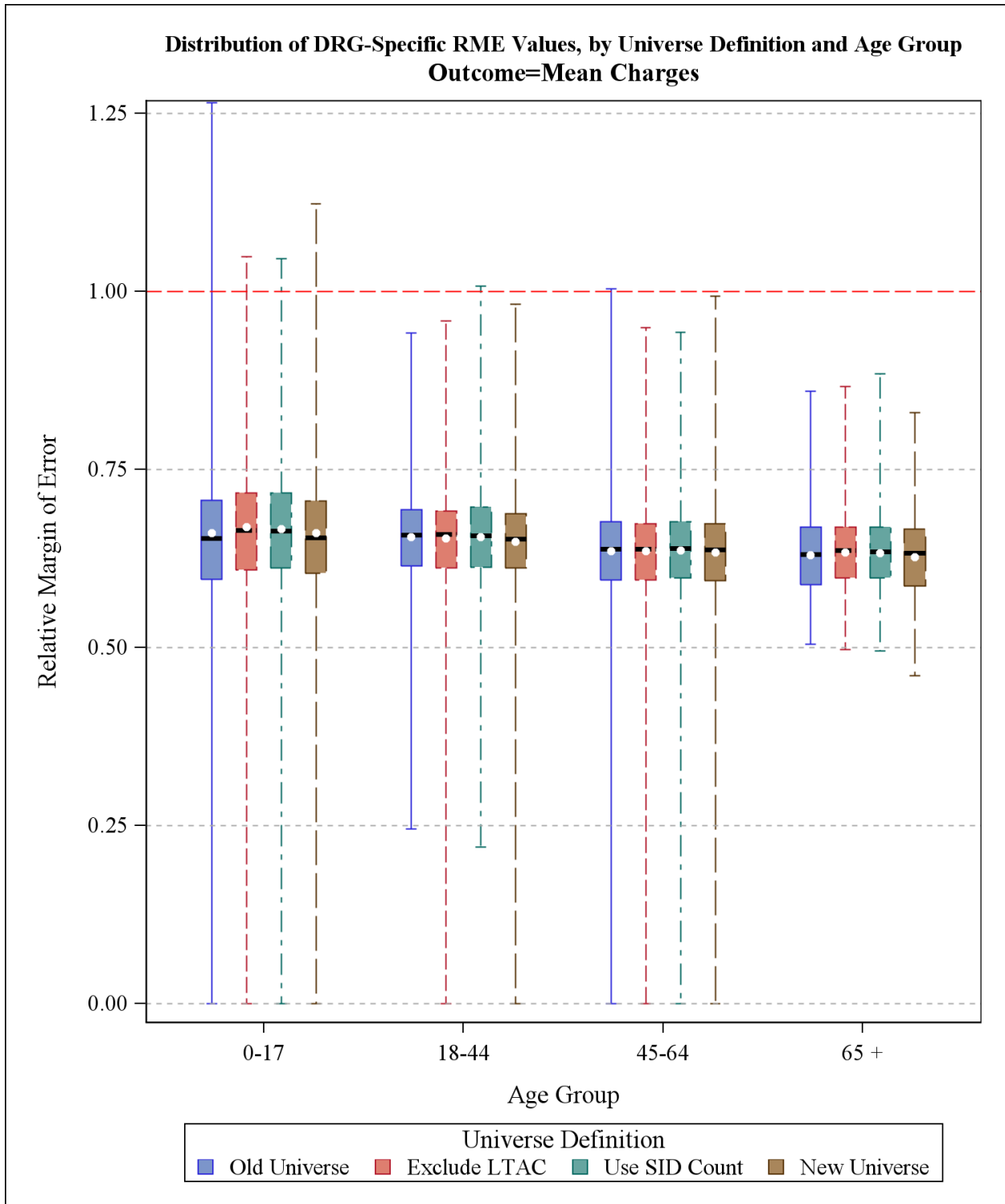
Abbreviations: LTAC, long-term acute care; SID, State Inpatient Databases

**Figure 7: Distribution of Diagnosis Related Group (DRG)-Specific Estimates of Relative Margin of Error (RME) for Average Length of Stay (ALOS), by Age Groups**



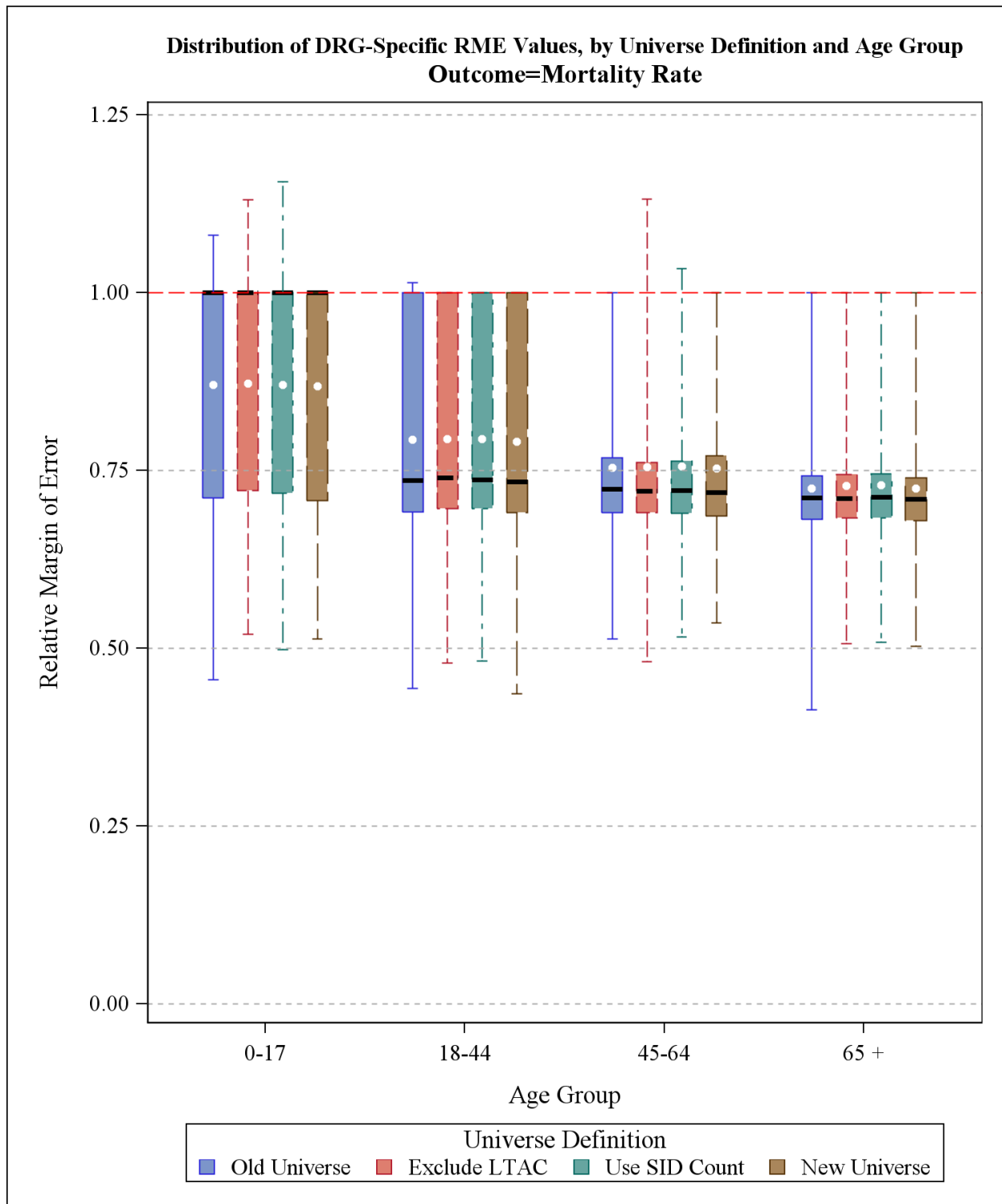
Abbreviations: LTAC, long-term acute care; SID, State Inpatient Databases

**Figure 8: Distribution of Diagnosis Related Group (DRG)-Specific Estimates of Relative Margin of Error (RME) for Average Charges, by Age Groups**



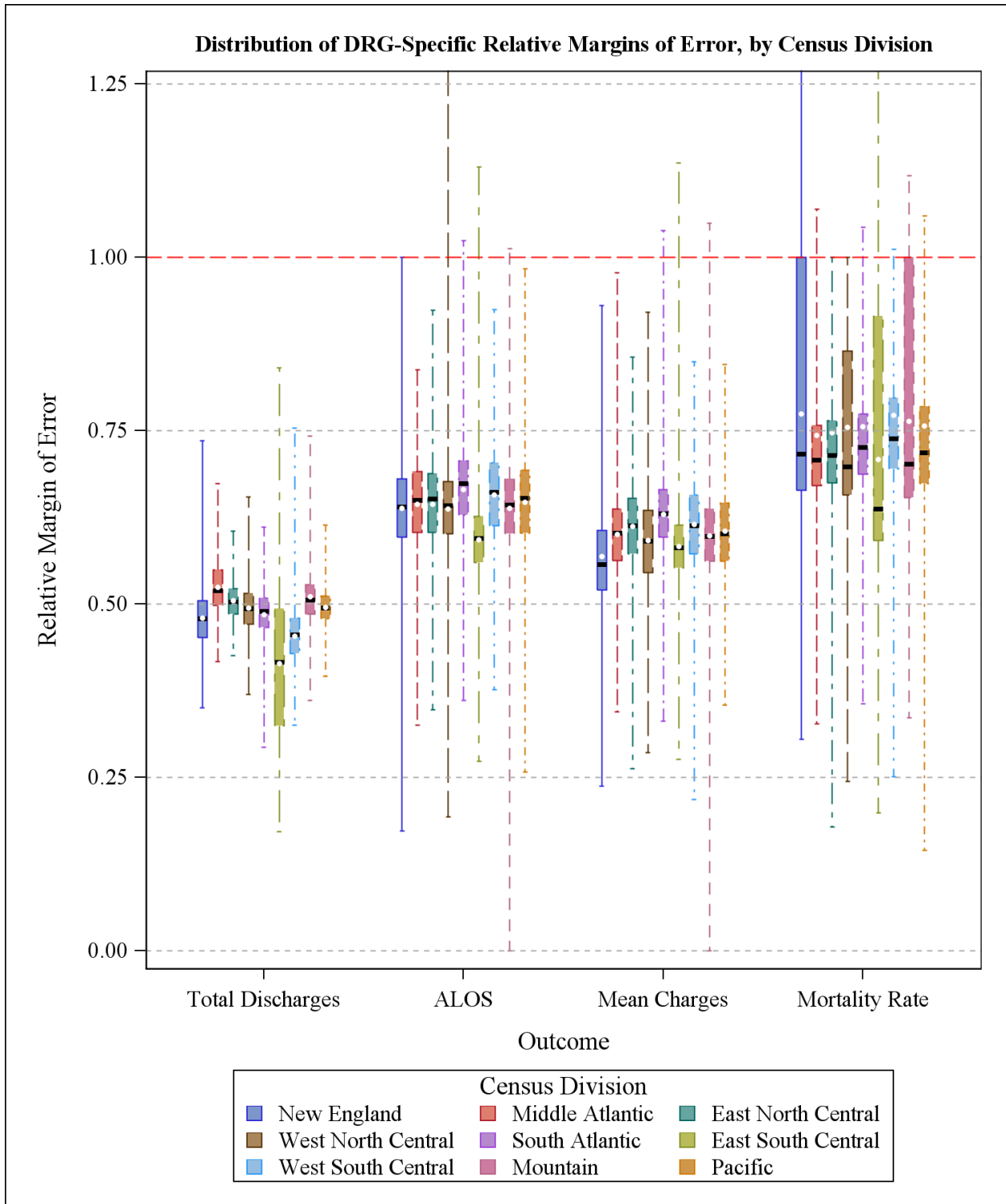
Abbreviations: LTAC, long-term acute care; SID, State Inpatient Databases

**Figure 9: Distribution of Diagnosis Related Group (DRG)-Specific Estimates of Relative Margin of Error (RME) for Mortality Rates, by Age Groups**



Abbreviations: LTAC, long-term acute care; SID, State Inpatient Databases

**Figure 10: Distribution of Diagnosis Related Group (DRG)-Specific Estimates of Relative Margin of Error (RME) for Outcomes, by Census Division**



## 6. SUMMARY AND CONCLUSIONS

In the 2012 study, findings from the environmental scan of the literature suggested that the NIS data are used for vital research on hospital outcomes in the United States by a broad range of health researchers and other professionals. Specifically, NIS data are used for hospital comparisons and disparity estimates, information pertaining to health risk factors, and the cost and quality of health care. NIS data have been analyzed using statistical methods designed for the analysis of categorical variables (e.g., logistic regression) and simple summary statistics (means, proportions, and tests of group differences). Last year's study focused on the efficiency of a new design for providing national estimates in comparison with the design currently in use.

In particular, that report recommended the stratified systematic sample (SYS) design because:

- It was simple and easy to execute.
- It was self-weighting, making the sample easy for analysts to use.
- Compared with the present NIS design, it delivered improved accuracy for all four outcomes across multiple subsets of the data. Compared with an alternative design that was tested (the Neyman allocation design), it provided about the same level of improved accuracy, but the improvements were more consistent across DRGs.
- It was straightforward to estimate accurate confidence intervals using standard statistical software.

In preparation for implementing the systematic sampling design for the 2012 NIS (to be released in June 2014), we:

- Enlisted HCUP Partner support for the new design.
- Removed long-term acute care hospitals from the hospital universe.
- Improved estimates of the total number of discharges in the universe used to derive sample weights.
- Tied the definition of a hospital to the State-supplied hospital identifier rather than to the AHA hospital identifier, whenever possible.
- Estimated the effect of all design changes on sample estimates.

The switch from drawing all discharges from a sample of hospitals to drawing a sample of discharges from all hospitals improved the *quality of NIS sample estimates*. However, the other modifications listed above affected the *values of universe statistics* (the values that sample statistics try to estimate). In particular, these modifications had an effect on the numbers and types of discharges in the universe; changes aimed at making more accurate national estimates for the universe of hospitals addressed by the NIS – short-term, acute care general and specialty hospitals.



Therefore, for this report, using HCUP and AHA annual survey data for 2011, we estimated the effects of these changes:

1. **Switching to the systematic sample design from the present NIS sample design.**<sup>28</sup> This change mainly affected the levels of the discharge counts for each census division. The previous design provided discharge weights that reflected the universe of discharges in each of the *four census regions*. The new design provided discharge weights that reflected the universe of discharges in each of the *nine census divisions*.
2. **Eliminating long-term acute care hospitals.** This change mainly affected statistics related to the elderly. Estimates of discharge counts, ALOS, charges, and mortality were all reduced for the older age groups because of the demographics of patients in LTAC hospitals.
3. **Using observed SID discharge counts in place of AHA admission counts to estimate the total number of discharges in the universe.** This change had a dramatic effect on estimates of discharge counts, and relatively minor effects on other outcomes. In 2011, the estimate of nationwide discharges fell from 38,338,545 to 36,935,306 (a 3.7 percent decrease) when we switched from AHA counts to SID counts. There are several reasons why the AHA counts and SID counts could disagree. However, the analysis described in Appendix A suggests that the main disagreements relate to: (1) the double counting of NICU patients based on the AHA data and (2) the probable inclusion in AHA counts and exclusion from SID counts of swing bed and nursing bed discharges for many States.
4. **Using SID hospital identifiers in place of AHA hospital identifiers to disaggregate hospitals combined by the AHA hospital identifier.** The effect of this change was negligible for all outcomes. However, this change will help ensure that hospitals are more accurately stratified and that discharges will be more accurately assigned to the hospital in which they receive care.

Importantly, none of these changes eroded the improvements we saw in the previous study in the accuracy of estimated outcomes. These changes did not alter the substantial reductions in the margins of error resulting from the new SYS design.

Finally, recognizing the effect that these changes will have on trends estimated from historical data, we recommend that AHRQ offer users a set of “trend weights” such as those that were offered following the redesign of the 1998 NIS.<sup>29</sup> For each past NIS, perhaps beginning with the 1998 NIS, we would recalculate the number of discharges in the universe (the weight numerator) after eliminating LTAC hospitals and using SID counts of discharges in place of AHA admission counts. Although these new weights will not have much effect on estimates of variance, they will have a substantial effect on estimates of totals and, to a lesser extent, on estimates of means and rates, historically. These trend weights should be preferred for trend analyses that combine the 2012 NIS with historical NIS data to adjust for the 2012 NIS redesign.

---

<sup>28</sup> This includes a revision of the hospital sampling strata to stratify hospitals by the nine census divisions rather than by the four census regions used in the existing NIS design. Switching to the systematic design had no effect on the universe and, therefore, no effect on values of universe statistics.

<sup>29</sup> On a related matter, given that the state will no longer be a NIS data element and that some variables, like race, are missing for entire states, we recommend that AHRQ provide a new Methods Series report with recommendations on missing data methods that NIS users can employ to address missing values.

## APPENDIX A: DIFFERENCES BETWEEN THE AHA-BASED DISCHARGE ESTIMATES AND THE SID-BASED DISCHARGE COUNTS

To investigate the differences between the AHA-based discharge estimates and the SID-based discharge counts, we searched the internet for discharge count information that was independent of the AHA survey and the SID data. We identified very few sources independent of the AHA survey and the SID data on which to base estimates of annual discharge counts for each hospital. We found the following:

- The Illinois Department of Public Health administers an annual hospital questionnaire. They release the hospital-specific responses in a published report and in a Microsoft<sup>®</sup> Excel file available to the public. The discharge counts in this report appear to be independent of the AHA data and the SID data.
- The Utah Department of Public Health publishes an annual report containing annual discharge counts for each hospital. However, this report appears to be based on the same SID data that we receive for HCUP as the counts were identical.
- The Tennessee Department of Health publishes a report based on a Joint Annual Report of Hospitals (JAR). These discharge counts appear to be independent of the AHA and the SID data. However, Tennessee is one of the few States where the SID-based count exceeded the AHA-based count in 2011 (by 1.1 percent; see Figure 4). Also, the data were in a format that was difficult to use so could not be employed in analysis.
- The West Virginia Health Care Authority publishes an annual report containing annual counts of discharges for each hospital's *fiscal year*. These counts appear to be independent of the AHA and SID counts. Because the definition of year used for this report (*fiscal year*) did not match the definition used in the SID (*calendar year*), we did not use this data source.

We performed an in-depth analysis of the Illinois data because the Illinois data offered calendar year counts separate from those contained in the AHA and SID data and reported the counts separately for different hospital units. Also, we knew from information on "HCUP SID File Compositions" that the Illinois SID file excluded stays in skilled nursing facilities or nursing homes attached to a hospital, whereas stays in other specialty units within the hospital (e.g., psychiatric, rehabilitation, acute long-term care) were included in the SID data. This seemed like a good opportunity to test whether the double counting of NICU patients, coupled with the exclusion of nursing bed stays, could possibly explain most of the difference between the AHA-based counts and the SID-based counts.

We merged the SID data with the Illinois hospital data for all hospital identifiers that were matched 1:1 with an AHA hospital identifier and for which the AHA admission counts were not imputed. This resulted in 96 matches for the 2010 data and 142 matches for the 2011 data.\* The main results are summarized in Table A-1 for data years 2010 and 2011.

For each year, the first row of statistics shows the count of SID discharges in the analytic data and the SID percentage of AHA counts. The SID count was 96.34 percent and 96.67 percent of

---

\* Matching was completed manually for the 2010 data based on limited data available on the Illinois Department of Health Web site. Matching was more successful by computer for the 2011 data based on more extensive data files provided by the Illinois DOPH.

the AHA count in 2010 and 2011, respectively. The second row expresses the AHA count as a percentage of the SID count, which represents the inverse of the first row percentages, but they are useful for comparisons with rows below it.

The third row (Illinois admissions plus newborns) expresses the Illinois count as a percentage of the SID count and as a percentage of the AHA count. This includes nursing bed discharges, and it double counts NICU patients because they are contained in the newborn count and in the total discharge count. This Illinois count represented 99.37 percent and 100.42 percent of the AHA count in 2010 and 2011, respectively. Therefore, these Illinois counts were very close to the AHA-based counts. However, these counts were 3.14 percent and 3.44 percent higher than the SID counts in 2010 and 2011, respectively, which were close to the AHA/SID differences shown in the second row (3.80 percent and 3.44 percent).

The fourth row (Illinois admissions plus newborns minus NICU) reflects the effect of eliminating the double counting of NICU patients by subtracting the count of NICU discharges from the sum of admissions plus newborns. This brought the Illinois counts closer to the SID counts by 0.59 percent and 0.66 percent in 2010 and 2011, respectively. As a result, we believe that the AHA-based counts are inflated by about 0.6 percent due to the double counting of NICU discharges.

Finally, the fifth row (Illinois admissions plus newborns minus NICU and swing, rehabilitation, and LTC beds) subtracts discharge counts from the NICU, swing beds, rehabilitation beds, and long-term care beds. Subtracting these counts from the Illinois discharge total resulted in close agreements between the Illinois counts and the SID counts. The adjusted Illinois counts equaled 99.75 percent and 100.80 percent of the SID count in 2010 and 2011, respectively.

**Table A-1. Summary of AHA Illinois Hospitals Matched 1:1 to SID Hospitals and Matched to Illinois Department of Health Survey and Without AHA Imputation**

<b>2010 Data</b>	<b>Discharges</b>	<b>SID Discharges, %</b>	<b>AHA Counts, %</b>
SID total discharges	885,249	100.00	96.34
AHA total counts (admissions + newborns)	918,880	103.80	100.00
Illinois admissions + newborns	913,090	103.14	99.37
Illinois admissions + newborns minus NICU	907,842	102.55	98.80
Illinois admissions + newborns minus NICU and swing, rehabilitation, and long-term care beds	882,894	99.73	96.08
<b>2011 Data</b>			
SID total discharges	1,258,133	100.00	96.67
AHA total discharges (admissions + newborns)	1,301,467	103.44	100.00
Illinois admissions + newborns	1,306,966	103.88	100.42
Illinois admissions + newborns minus NICU	1,298,650	103.22	99.78
Illinois admissions + newborns minus NICU and swing, rehabilitation, and long-term care beds	1,268,143	100.80	97.44

Abbreviations: AHA, American Hospital Association; NICU; neonatal intensive care unit; SID, State Inpatient Databases

Consequently, the difference between the SID-based count of discharges and the AHA-based count in Illinois was almost completely explained by the AHA-based count having double-counted NICU patients and having included discharge counts from the NICU, swing beds, rehabilitation beds, and long-term care beds.

Table A-1 showed results in the aggregate. However, we also analyzed counts at the hospital level. We regressed each hospital's 2011 SID count on the department-specific admission counts taken from the 2011 Illinois survey.\* There was one observation for each hospital. The dependent variable was the number of SID discharges. The predictors were the number of admissions for that hospital for each category given by the Illinois DOPH survey data. Below are the estimated coefficients (column labeled "Estimate") with their degrees of freedom (DF) and 95 percent confidence limits:

<b>Parameter Estimates</b>				
<b>Parameter</b>	<b>DF</b>	<b>Estimate</b>	<b>95% Confidence Limits</b>	
<b>Med_Surg_Admissions</b>	1	0.9941	0.9690	1.0039
<b>OBGYN_plus_Births</b>	1	0.9823	0.9693	1.0184
<b>NICU_Admissions</b>	1	0.1255	-0.3888	0.3953
<b>Direct_ICU_Admission</b>	1	0.9712	0.8817	1.0680
<b>Pediatric_Admissions</b>	1	1.0554	1.0423	1.1534
<b>LTC_Admissions</b>	1	-0.0222	-0.1037	0.0580
<b>Swing_Bed_Admissions</b>	1	-0.0198	-0.0972	0.0241
<b>Rehabilitation_Admiss</b>	1	0.9460	0.8579	1.1347
<b>Acute_Mental_Admissi</b>	1	0.9997	0.9624	1.0434
<b>LTC_Acute_Admissions</b>	1	1.0030	0.9135	1.0216

We combined OBGYN with total live births because those two counts were highly correlated (nearly equal counts of OBGYN and births for each hospital). We wanted to avoid the collinearity that would result from entering them as separate predictors. For most of the admission categories, the coefficients were not significantly different from 1.0 (the confidence interval includes the value of 1). For NICU, LTC, and swing bed admissions, the coefficients were not significantly different from zero (the confidence interval includes the value of 0). The NICU admissions were already included in the count of live births, so it is not surprising that its coefficient was not statistically different from zero. However, the near-zero coefficients for LTC and swing bed admissions indicate that those types of admissions were not included in the count of SID discharges.

---

\* We used median regressions to obtain these results, which estimate coefficients that minimize the absolute value of errors. We did not use OLS regression because we were not interested in minimizing squared error and the resulting coefficients would be more heavily influenced by outliers.

To further clarify the results, we fit one other regression with just three predictor variables—

1. Admissions = total of all admission categories + non-NICU births
2. LTC admissions
3. Swing bed admissions

Below are the coefficients:

<b>Parameter Estimates</b>				
<b>Parameter</b>	<b>DF</b>	<b>Estimate</b>	<b>95% Confidence Limits</b>	
<b>Admissions</b>	1	0.9919	0.9883	0.9953
<b>LTC_Admissions</b>	1	-0.9722	-1.0866	-0.9280
<b>Swing_Bed_Admissions</b>	1	-0.9869	-1.0640	-0.9579

This regression indicated that the SID discharge count was estimated by 99.2 percent of the Illinois DOPH survey total admission count (including newborns) minus 97.2 percent of the LTC admissions minus 98.7 percent of the swing bed admissions. Again, the message is clear that the Illinois SID data excluded LTC and swing bed admissions. More to the point, the AHA-based counts apparently included these types of admissions for Illinois. Consequently, *at the hospital level*, the difference between the AHA counts and the SID counts were almost completely explained by the AHA-based counts double counting NICU patients and including LTC and swing bed admissions.

## APPENDIX B: PLANNED DATA ELEMENT CHANGES

**Table B-1. Data Elements in the NIS Inpatient Core Files**

Data elements that are *italicized* are not included in the 2011 NIS Inpatient Core files, but are only available in previous years' files.

Type of Data Element	HCUP Name	Years Available	Coding Notes	Plan for 2012
<b>Admission information</b>				
Admission day	AWEEKEND	1998-2011	Admission on weekend: (0) admission on Monday-Friday, (1) admission on Saturday-Sunday	Keep
	<i>ADAYWK</i>	<i>1988-1997</i>	<i>Admission day of week: (1) Sunday, (2) Monday, (3) Tuesday, (4) Wednesday, etc.</i>	<i>N/A</i>
Admission month	AMONTH	1988-2011	Admission month coded from (1) January to (12) December	Keep
Admission source	ASOURCE	1988-2011	Admission source, uniform coding: (1) ER, (2) another hospital, (3) another facility including long-term care, (4) court/law enforcement, (5) routine/birth/other	Drop
	<i>ASOURCE_X</i>	1998-2011	<i>Admission source, as received from data source using State-specific coding</i>	<i>Drop</i>
	<i>ASOURCEUB92</i>	<i>2003-2011</i>	<i>Admission source (UB-92 standard coding). For newborn admissions (ATYPE = 4): (1) normal newborn, (2) premature delivery, (3) sick baby, (4) extramural birth; For non-newborn admissions (ATYPE NE 4): (1) physician referral, (2) clinic referral, (3) HMO referral, (4) transfer from a hospital, (5) transfer from a skilled nursing facility, (6) transfer from a another health care facility, (7) emergency room, (8) court/law enforcement, (A) transfer from a critical access hospital, (B) transfer from another home health agency, (C) readmission to same home health agency, (D) transfer from one distinct unit of the hospital to another distinct unit of the same hospital resulting in a separate claim to the payer, (E) transfer from ambulatory surgery center, (F) transfer from hospice and under hospice plan</i>	<i>Drop</i>
	<i>POINTOFORIGIN_X</i>	<i>2009-2011</i>	<i>Point of origin for admission or visit, as received from source</i>	<i>Drop</i>

Type of Data Element	HCUP Name	Years Available	Coding Notes	Plan for 2012
	POINTOFORIGIN_UB04	2007-2011	Point of origin for admission or visit, UB-04 standard coding. For newborn admission (ATYPE = 4): (5) Born inside this hospital, (6) Born outside of this hospital; For non-newborn admissions (ATYPE NE 4): (1) Non-health care facility point of origin, (2) Clinic, (4) Transfer from a hospital (different facility), (5) Transfer from a skilled Nursing Facility (SNF) or Intermediate Care Facility (ICF), (6) Transfer from another health care facility, (7) Emergency room, (8) Court/law enforcement, (B) Transfer from another Home Health Agency, (C) Readmission to Same Home Health Agency, (D) Transfer from one distinct unit of the hospital to another distinct unit of the same hospital resulting in a separate claim to the payer, (E) Transfer from ambulatory surgery center, (F) Transfer from hospice and is under a hospice plan of care or enrolled in a hospice program	Drop
Transferred into hospital	TRAN_IN	2008-2011	Transfer In Indicator: (0) not a transfer, (1) transferred in from a different acute care hospital [ATYPE NE 4 & (ASOURCE=2 or POO=4)], (2) transferred in from another type of health facility [ATYPE NE 4 & (ASOURCE=3 or POO=5,6)]	Keep
Indicator of emergency department service	HCUP_ED	2007-2011	Indicator that discharge record includes evidence of emergency department (ED) services: (0) Record does not meet any HCUP Emergency Department criteria, (1) Emergency Department revenue code on record, (2) Positive Emergency Department charge (when revenue center codes are not available), (3) Emergency Department CPT procedure code on record, (4) Admission source of ED, (5) State-defined ED record; no ED charges available	Keep
Admission type	ATYPE	1988-2011	Admission type, uniform coding: (1) emergency, (2) urgent, (3) elective, (4) newborn, (5) Delivery (coded in 1988-1997 data only), (5) trauma center beginning in 2003 data, (6) other	Drop
	ELECTIVE	2002-2011	Indicates elective admission: (1) elective, (0) non-elective admission	Keep



Type of Data Element	HCUP Name	Years Available	Coding Notes	Plan for 2012
<b>Patient demographic and location information</b>				
Age at admission	AGE	1988-2011	Age in years coded 0-124 years	Keep
	AGEDAY	1988-2011	Age in days coded 0-364 only when the age in years is less than 1	Drop
	AGE_NEONATE		Neonatal age (first 28 days after birth) indicator: (0) non-neonatal age (1) neonatal age	Add
Sex of patient	FEMALE	1998-2011	Indicates gender for NIS beginning in 1998: (0) male, (1) female	Keep
	SEX	1988-1997	Indicates gender for NIS prior to 1998: (1) male, (2) female	N/A
Race of patient	RACE	1988-2011	Race, uniform coding: (1) white, (2) black, (3) Hispanic, (4) Asian or Pacific Islander, (5) Native American, (6) other	Keep
Location of patient's residence	PL_NCHS2006	2007-2011	Patient Location: NCHS Urban-Rural Code (V2006). This is a six-category urban-rural classification scheme for U.S. counties: (1) "Central" counties of metro areas of >=1 million population,(2) "Fringe" counties of metro areas of >=1 million population,(3) Counties in metro areas of 250,000-999,999 population,(4) Counties in metro areas of 50,000-249,999 population,(5) Micropolitan counties,(6) Not metropolitan or micropolitan counties	Keep
	PL_UR_CAT4	2003-2006	Urban-rural designation for patient's county of residence: (1) large metropolitan, (2) small metropolitan, (3) micropolitan, (4) non-metropolitan or micropolitan	N/A
Median household income for patient's ZIP Code	ZIPINC_QRTL	2003-2011	Median household income quartiles for patient's ZIP Code. For 2008, the median income quartiles are defined as: (1) \$1 - \$38,999; (2) \$39,000 - \$47,999; (3) \$48,000 - 62,999; and (4) \$63,000 or more.	Keep
	ZIPINC	1998-2002	Median household income category in files beginning in 1998: (1) \$1-\$24,999, (2) \$25,000-\$34,999, (3) \$35,000-\$44,999, (4) \$45,000 and above	N/A
	ZIPINC4	1988-1997	Median household income category in files prior to 1998: (1) \$1-\$25,000, (2) \$25,001-\$30,000, (3) \$30,001-\$35,000, (4) \$35,001 and above	N/A

Type of Data Element	HCUP Name	Years Available	Coding Notes	Plan for 2012
	ZIPINC8	1988-1997	Median household income category in files prior to 1998: (1) \$1-\$15,000, (2) \$15,001-\$20,000, (3) \$20,001-\$25,000, (4) \$25,001-\$30,000, (5) \$30,001-\$35,000, (6) \$35,001-\$40,000, (7) \$40,001-\$45,000, (8) \$45,001 or more	N/A

### Payer information

Primary expected payer	PAY1	1988-2011	Expected primary payer, uniform: (1) Medicare, (2) Medicaid, (3) private including HMO, (4) self-pay, (5) no charge, (6) other	Keep
	PAY1_N	1988-1997	Expected primary payer, nonuniform: (1) Medicare, (2) Medicaid, (3) Blue Cross, Blue Cross PPO, (4) commercial, PPO, (5) HMO, PHP, etc., (6) self-pay, (7) no charge, (8) Title V, (9) Worker's Compensation, (10) CHAMPUS, CHAMPVA, (11) other government, (12) other	N/A
	PAY1_X	1998-2011	Expected primary payer, as received from the data source	Drop
Secondary expected payer	PAY2	1988-2011	Expected secondary payer, uniform: (1) Medicare, (2) Medicaid, (3) private including HMO, (4) self-pay, (5) no charge, (6) other	Drop
	PAY2_N	1988-1997	Expected secondary payer, nonuniform: (1) Medicare, (2) Medicaid, (3) Blue Cross, Blue Cross PPO, (4) commercial, PPO, (5) HMO, PHP, etc., (6) self-pay, (7) no charge, (8) Title V, (9) Worker's Compensation, (10) CHAMPUS, CHAMPVA, (11) other government, (12) other	N/A
	PAY2_X	1998-2011	Expected secondary payer, as received from the data source	Drop

### Diagnosis and procedure information

Type of Data Element	HCUP Name	Years Available	Coding Notes	Plan for 2012
ICD-9-CM diagnoses	DX1 – DX25	1988-2011	Diagnoses, principal and secondary (ICD-9-CM). Beginning in 2003, the diagnosis array does not include any external cause of injury codes. These codes have been stored in a separate array ECODEn. Beginning in 2009, the diagnosis array was increased from 15 to 25.	Keep
	NDX	1988-2011	Number of diagnoses coded on the original record	Keep
	DSNDX	1988-1997	Number of diagnosis fields provided by the data source	N/A
	DXSYS	1988-1997	Diagnosis coding system (ICD-9-CM)	N/A
	DXV1 - DXV15	1988-1997	Diagnosis validity flags	N/A
External causes of injury and poisoning	ECODE1 - ECODE4	2003-2011	External cause of injury and poisoning code, primary and secondary (ICD-9-CM). Beginning in 2003, external cause of injury codes are stored in a separate array ECODEn from the diagnosis codes in the array DXn. Prior to 2003, these codes are contained in the diagnosis array (DXn).	Keep
	NECODE	2003-2011	Number of external cause of injury codes on the original record. A maximum of 4 codes are retained on the NIS.	Keep
ICD-9-CM procedures	PR1 - PR15	1988-2011	Procedures, principal and secondary (ICD-9-CM)	Keep
	NPR	1988-2011	Number of procedures coded on the original record	Keep
	DSNPR	1988-1997	Number of procedure fields in this data source	N/A
	PRSYS	1988-1997	Procedure system (1) ICD-9-CM, (2) CPT-4, (3) HCPCS/CPT-4	N/A
	PRV1 -PRV15	1988-1997	Procedure validity flag: (0) Indicates a valid and consistent procedure code, (1) Indicates an invalid code for the discharge date	N/A
	PRDAY1	1988-2011	Number of days from admission to principal procedure.	Keep
	PRDAY2 - PRDAY15	1988-2011	Number of days from admission to secondary procedures	Keep

#### DRG information

Type of Data Element	HCUP Name	Years Available	Coding Notes	Plan for 2012
Diagnosis Related Group (DRG)	DRG	1988-2011	DRG in use on discharge date	Keep
	DRG_NoPOA	2008-2011	DRG in use on discharge date, calculated without Present On Admission (POA) indicators	Keep
	DRGVER	1988-2011	Grouper version in use on discharge date	Keep
	<i>DRG10</i>	<i>1988-1999</i>	<i>DRG Version 10 (effective October 1992 - September 1993)</i>	<i>N/A</i>
	<i>DRG18</i>	<i>1998-2005</i>	<i>DRG Version 18 (effective October 2000 - September 2001)</i>	<i>N/A</i>
	DRG24	2006-2011	DRG Version 24 (effective October 2006 - September 2007)	Keep
Major Diagnosis Category (MDC)	MDC	1988-2011	MDC in use on discharge date	Keep
	MDC_noPOA	2009-2011	MDC in use on discharge date, calculated without Present on Admission (POA) indicators	Keep
	<i>MDC10</i>	<i>1988-1999</i>	<i>MDC Version 10 (effective October 1992 - September 1993)</i>	<i>N/A</i>
	<i>MDC18</i>	<i>1998-2005</i>	<i>MDC Version 18 (effective October 2000 - September 2001)</i>	<i>N/A</i>
	MDC24	2006-2011	MDC Version 24 (effective October 2006 - September 2007)	Keep

**Other data elements derived from ICD-9-CM codes**

see also:

**Table B-3, Data Elements in the NIS Disease Severity Measures File and  
Table B-4, Data Elements in the NIS Diagnosis and Procedures Groups File**

Clinical Classifications Software (CCS) category	DXCCS1 – DXCCS25	1998-2011	Clinical Classifications Software (CCS) category for all diagnoses for NIS beginning in 1998. Beginning in 2009, the diagnosis array was increased from 15 to 25.	Keep
	<i>DCCHPR1</i>	<i>1988-1997</i>	<i>CCS category for principal diagnosis for NIS prior to 1998. CCS was formerly called the Clinical Classifications for Health Policy Research (CCHPR).</i>	<i>N/A</i>
	E_CCS1 - E_CCS4	2003-2011	CCS category for the external cause of injury and poisoning codes	Keep
	PRCCS1 - PRCCS15	1998-2011	CCS category for all procedures for NIS beginning in 1998	Keep

Type of Data Element	HCUP Name	Years Available	Coding Notes	Plan for 2012
	PCCHPR1	1988-1997	CCS category for principal procedure for NIS prior to 1998. CCS was formerly called the Clinical Classifications for Health Policy Research (CCHPR).	N/A
Number of chronic conditions	NCHRONIC	2008-2011	Count of chronic conditions in the diagnosis vector	Keep
Operating room procedure indicator	ORPROC	2009-2011	Major operating room procedure indicator for the record: (0) no major operating room procedure, (1) major operating room procedure	Keep
Neonatal/ maternal flag	NEOMAT	1988-2011	Assigned from diagnoses and procedure codes: (0) not maternal or neonatal, (1) maternal diagnosis or procedure, (2) neonatal diagnosis, (3) maternal and neonatal on same record	Keep
Indicates in-hospital birth	HOSPBIRTH	2006-2011	Indicator that discharge record includes diagnosis of birth that occurred in the hospital: (0) Not an in-hospital birth, (1) In-hospital birth	Keep
<b>Resource use information</b>				
Total charges	TOTCHG	1988-2011	Total charges, edited	Keep
	TOTCHG_X	1988-2011	Total charges, as received from data source	Drop
Length of stay	LOS	1988-2011	Length of stay, edited	Keep
	LOS_X	1988-2011	Length of stay, as received from data source	Drop
<b>Discharge information</b>				
Discharge quarter	DQTR	1988-2011	Coded: (1) First quarter, Jan - Mar, (2) Second quarter, Apr - Jun, (3) Third quarter, Jul - Sep, (4) Fourth quarter, Oct - Dec	Keep
	DQTR_X	2006-2011	Discharge quarter, as received from data source	Drop
Discharge year	YEAR	1988-2011		Keep
Disposition of patient (discharge status)	DISP	1988-1997	Disposition of patient, uniform coding used prior to 1998: (1) routine, (2) short-term hospital, (3) skilled nursing facility, (4) intermediate care facility, (5) another type of facility, (6) home health care, (7) against medical advice, (20) died	N/A

Type of Data Element	HCUP Name	Years Available	Coding Notes	Plan for 2012
	DIED	1988-2011	Indicates in-hospital death: (0) did not die during hospitalization, (1) died during hospitalization	Keep
	DISPUB92	1998-2006	<i>Disposition of patient, UB-92 coding: (1) routine, (2) short-term hospital, (3) skilled nursing facility, (4) intermediate care, (5) another type of facility, (6) home health care, (7) against medical advice, (8) home IV provider, (20) died in hospital, (40) died at home, (41) died in a medical facility, (42) died, place unknown, (43) alive, Federal health facility, (50) Hospice, home, (51) Hospice, medical facility, (61) hospital-based Medicare approved swing bed, (62) another rehabilitation facility, (63) long-term care hospital, (64) certified nursing facility, (65) psychiatric hospital, (66) critical access hospital (71) another institution for outpatient services, (72) this institution for outpatient services, (99) discharged alive, destination unknown</i>	N/A

Type of Data Element	HCUP Name	Years Available	Coding Notes	Plan for 2012
	DISPUB04	2006-2011	<p>Disposition of patient, UB04 standard coding: (1 )Discharged to Home or Self Care (Routine Discharge), (2) Discharged/transferred to a Short-Term Hospital for Inpatient Care, (3) Discharged/transferred to a Skilled Nursing Facility (SNF), (4) Discharged/transferred to an Intermediate Care Facility (ICF), (5) Discharged/transferred to a Designated Cancer Center or Children's Hospital (Effective 10/1/07), (5) Discharged/transferred to another type of institution not defined elsewhere (Effective prior to 10/1/07), (6) Discharged/transferred to Home under care of Organized Home Health Service Organization, (7) Left Against Medical Advice or Discontinued Care, (8) home IV provider, (9) Admitted as an inpatient to this hospital - valid only on outpatient data, (20) Expired, (40) Expired at home, (41) Expired in a Medical Facility, (42) Expired - place unknown, (43) Discharged/transferred to a Federal Health Care Facility, (50) Hospice – Home, (51) Hospice - Medical Facility , (61) Discharged/transferred to a Hospital-Based Medicare approved Swing Bed, (62) Discharged/transferred to an Inpatient Rehabilitation Facility (IRF) including Rehabilitation Distinct part unit of a hospital, (63) Discharged/transferred to a Medicare certified Long Term Care Hospital (LTCH), (64) Discharged/transferred to a Nursing Facility certified by Medicaid, but not certified by Medicare, (65) Discharged/transferred to a Psychiatric Hospital or Psychiatric distinct part unit of a hospital, (66) Discharged/transferred to a Critical Access Hospital (CAH), (70) Discharged/transferred to another type of institution not defined elsewhere (Effective 10/1/07), (71) Another institution for outpatient services, (72) This institution for outpatient services, (99) Discharged alive, destination unknown</p>	Drop

Type of Data Element	HCUP Name	Years Available	Coding Notes	Plan for 2012
	DISPUNIFORM	1998-2011	Disposition of patient, uniform coding used beginning in 1998: (1) routine, (2) transfer to short-term hospital, (5) other transfers, including skilled nursing facility, intermediate care, and another type of facility, (6) home health care, (7) against medical advice, (20) died in hospital, (99) discharged alive, destination unknown	Keep
	TRAN_OUT	2010-2011	Transfer Out Indicator: (0) not a transfer, (1) transferred out to a different acute care hospital, (2) transferred out to another type of health facility	Keep

### Weights (to calculate national estimates)

Discharge weights (weights for 1988-1993 are on Hospital Weights file)	DISCWT	1998-2011	Discharge weight on Core file and Hospital Weights file for NIS beginning in 1998. In all data years except 2000, this weight is used to create national estimates for all analyses. In 2000 only, this weight is used to create national estimates for all analyses, excluding those that involve total charges.	Keep
	<i>DISCWT_U</i>	1993-1997	<i>Discharge weight on Core file and Hospital Weights file for NIS prior to 1998</i>	N/A
	<i>DISCWTcharge</i>	2000	<i>Discharge weight for national estimates of total charges. In 2000 only, this weight is used to create national estimates for analyses that involve total charges.</i>	N/A
	<i>DISCWT10</i>	1998-2004	<i>Discharge weight on 10% subsample Core file for NIS from 1998 to 2004. In all data years except 2000, this weight is used to create national estimates for all analyses. In 2000 only, this weight is used to create national estimates for all analyses, excluding those that involve total charges.</i>	N/A
	<i>D10CWT_U</i>	1993-1997	<i>Discharge weight on 10% subsample Core file for NIS prior to 1998</i>	N/A
	<i>DISCWTcharge10</i>	2000	<i>Discharge weight for national estimates of total charges on 10% subsample file. In 2000 only, this weight is used to create national estimates for analyses that involve total charges.</i>	N/A



Type of Data Element	HCUP Name	Years Available	Coding Notes	Plan for 2012
<b>Hospital information</b>				
Hospital identifiers (encrypted)	DSHOSPID	1988-2011	Hospital number as received from the data source	Drop
	HOSPID	1988-2011	HCUP hospital number (links to Hospital Weights file)	Drop
	HOSP_NIS		NIS hospital number (links to Hospital Weights file; does not link to previous years)	Add
Hospital location	HOSPST	1988-2011	State postal code for the hospital (e.g., AZ for Arizona)	Drop
	HOSP_DIVISION		Census Divisin of hospital (STRATA): (1) New England, (2) Middle Atlantic, (3) East North Central, (4) West North Central, (5) South Atlantic, (6) East South Central, (7) West South Central, (8) Mountain, (9) Pacific	Add
	HOSPSTCO	1988-2002	<i>Modified Federal Information Processing Standards (FIPS) State/county code for the hospital links to Area Resource File (available from the Bureau of Health Professions, Health Resources and Services Administration). Beginning in 2003, this data element is available only on the Hospital Weights file.</i>	N/A
Hospital stratifier	NIS_STRATUM	1998-2011	Stratum used to sample hospitals, based on geographic region, control, location/teaching status, and bed size. Stratum information is also contained in the Hospital Weights file.	Keep
<b>Other identifiers</b>				
Physician identifiers, synthetic	MDID_S	1988-2000	<i>Synthetic attending physician number in files prior to 2001</i>	N/A
	MDNUM1_R	2003-2009	<i>Re-identified attending physician number in files starting in 2003</i>	N/A
	MDNUM1_S	2001-2002	<i>Synthetic attending physician number in files beginning in 2001 and discontinued in 2003</i>	N/A
	SURGID_S	1988-2000	<i>Synthetic primary surgeon number in files prior to 2001</i>	N/A

<b>Type of Data Element</b>	<b>HCUP Name</b>	<b>Years Available</b>	<b>Coding Notes</b>	<b>Plan for 2012</b>
	<i>MDNUM2_R</i>	<i>2003-2009</i>	<i>Re-identified secondary physician number in files starting in 2003</i>	<i>N/A</i>
	<i>MDNUM2_S</i>	<i>2001-2002</i>	<i>Synthetic secondary physician number in files beginning in 2001 and discontinued in 2003</i>	<i>N/A</i>
Data source information	<i>DSNUM</i>	<i>1988-1997</i>	<i>Data source number</i>	<i>N/A</i>
	<i>DSTYPE</i>	<i>1988-1997</i>	<i>Data source type: (1) State data organization, (2) Hospital association, (3) Consortia</i>	<i>N/A</i>
Record identifier, synthetic	<i>KEY</i>	<i>1998-2011</i>	<i>Unique record number for file beginning in 1998</i>	<i>Drop</i>
Record identifier, synthetic	<i>KEY_NIS</i>		<i>Unique record number for file beginning in 2012.</i>	<i>Add</i>
	<i>SEQ</i>	<i>1988-1997</i>	<i>Unique record number for NIS prior to 1998</i>	<i>N/A</i>
	<i>SEQ_SID</i>	<i>1994-1997</i>	<i>Unique record number for NIS and SID prior to 1998</i>	<i>N/A</i>
	<i>PROCESS</i>	<i>1988-1997</i>	<i>Processing number for NIS prior to 1998</i>	<i>N/A</i>

[Return to Report](#)

**Table B-2. Data Elements in the NIS Hospital Weights Files**

Data elements that are *italicized* are not included in the 2011 NIS Hospital Weights File, but are only available in previous years' files.

Type of Data Element	HCUP Name	Years Available	Coding Notes	Plan For 2012
Discharge counts	N_DISC_U	1988-2011	Number of target universe discharges in the stratum	Keep
	S_DISC_U	1988-2011	Number of sampled discharges in the sampling stratum (NIS_STRATUM or STRATUM)	Keep
	<i>S_DISC_S</i>	<i>1988-1997</i>	<i>Number of sampled discharges in the stratum STRAT_ST</i>	<i>N/A</i>
	<i>N_DISC_F</i>	<i>1988-1997</i>	<i>Number of frame discharges in the stratum</i>	<i>N/A</i>
	<i>N_DISC_S</i>	<i>1988-1997</i>	<i>Number of State's discharges in the stratum</i>	<i>N/A</i>
	TOTAL_DISC	1998-2011	Total number of discharges from this hospital in the NIS	Keep
	<i>TOTDSCHG</i>	<i>1988-1997</i>	<i>Total number of discharges from this hospital in the NIS</i>	<i>N/A</i>
Discharge weights	DISCWT	1998-2011	Discharge weight used in the NIS beginning in 1998. In all data years except 2000, this weight is used to create national estimates for all analyses. In 2000 only, this weight is used to create national estimates for all analyses, excluding those that involve total charges.	Keep
	<i>DISCWT_U</i>	<i>1988-1997</i>	<i>Discharge weights used in the NIS prior to 1998.</i>	<i>N/A</i>
	<i>DISCWT_F</i>	<i>1988-1997</i>	<i>Discharge weights to the sample frame are available only in 1988-1997</i>	<i>N/A</i>
	<i>DISCWT_S</i>	<i>1988-1997</i>	<i>Discharge weights to the State are available only in 1988-1997</i>	<i>N/A</i>
	<i>DISCWTcharge</i>	<i>2000</i>	<i>Discharge weight for national estimates of total charges for 2000 only.</i>	<i>N/A</i>
Discharge Year	YEAR	1988-2011	Discharge year	Keep
Hospital counts	<i>N_HOSP_F</i>	<i>1988-1997</i>	<i>Number of frame hospitals in the stratum</i>	<i>N/A</i>
	<i>N_HOSP_S</i>	<i>1988-1997</i>	<i>Number of State's hospitals in the stratum</i>	<i>N/A</i>
	N_HOSP_U	1988-2011	Number of target universe hospitals in the stratum	Keep
	<i>S_HOSP_S</i>	<i>1988-1997</i>	<i>Number of sampled hospitals in STRAT_ST</i>	<i>N/A</i>
	S_HOSP_U	1988-2011	Number of sampled hospitals in the stratum (NIS_STRATUM or STRATUM)	Keep

Type of Data Element	HCUP Name	Years Available	Coding Notes	Plan For 2012
Hospital identifiers	HOSPID	1988-2011	HCUP hospital number (links to Inpatient Core files)	Drop
	HOSP_NIS		NIS hospital number (links to Hospital Weights file; does not link to previous years)	Add
	AHAID	1988-2011	AHA hospital identifier that matches AHA Annual Survey Database (not available for all States)	Drop
	IDNUMBER	1988-2011	AHA hospital identifier without the leading 6 (not available for all States)	Drop
	HOSPNAME	1993-2011	Hospital name from AHA Annual Survey Database (not available for all States)	Drop
Hospital location	HOSPADDR	1993-2011	Hospital address from AHA Annual Survey Database (not available for all States)	Drop
	HOSPCITY	1993-2011	Hospital city from AHA Annual Survey Database (not available for all States)	Drop
	HOSPST	1988-2011	Hospital State postal code for hospital (e.g., AZ for Arizona)	Drop
	HOSPSTCO	2002-2011	Modified Federal Information Processing Standards (FIPS) State/county code	Drop
	HFIPSSTCO	2005-2011	Unmodified Federal Information Processing Standards (FIPS) State/county code for the hospital. Links to the Area Resource File (available from the Bureau of Health Professions, Health Resources and Services Administration)	Drop
	HOSPZIP	1993-2011	Hospital ZIP Code from AHA Annual Survey Database (not available for all States)	Drop
Hospital characteristics	HOSP_BEDSIZE	1998-2011	Bed size of hospital (STRATA): (1) small, (2) medium, (3) large	Keep
	<i>H_BEDSZ</i>	<i>1993-1997</i>	<i>Bed size of hospital: (1) small, (2) medium, (3) large</i>	<i>N/A</i>
	<i>ST_BEDSZ</i>	<i>1988-1992</i>	<i>Bed size of hospital: (1) small, (2) medium, (3) large</i>	<i>N/A</i>
	HOSP_CONTROL	1998-2011	Control/ownership of hospital, collapsed (STRATA): (0) government or private, collapsed category, (1) government, nonfederal, public, (2) private, non-profit, voluntary, (3) private, invest-own, (4) private, collapsed category	Drop
	H_CONTRL	1993-1997, 2008-2011	Control/ownership of hospital: (1) government, nonfederal (2) private, non-profit (3) private, investor-own	Keep

Type of Data Element	HCUP Name	Years Available	Coding Notes	Plan For 2012
	ST_OWNER	1988-1992	Control/ownership of hospital: (1) public (2) private, non-profit (3) private for profit	N/A
	HOSP_LOCATION	1998-2011	Location: (0) rural, (1) urban	Drop
	H_LOC	1993-1997	Location: (0) rural, (1) urban	N/A
	HOSP_LOCTEACH	1998-2011	Location/teaching status of hospital (STRATA): (1) rural, (2) urban non-teaching, (3) urban teaching	Keep
	HOSP_MHSMEMBER	2007-2011	Multi-hospital system membership: (0) non-member, (1) member	Drop
	HOSP_MHSCLUSTER	2007-2011	Multi-hospital system cluster code: (1) centralized health system, (2) centralized physician/insurance health system, (3) moderately centralized health system, (4) decentralized health system, (5) independent hospital system, (6) unassigned	Drop
	HOSP_RNPCT	2007-2011	Percentage of RNs among all nurses (RNs and LPNs)	Drop
	HOSP_RNFTEAPD	2007-2011	RN FTEs per 1000 adjusted inpatient days	Drop
	HOSP_LPNFTEAPD	2007-2011	LPN FTEs per 1000 adjusted inpatient days	Drop
	HOSP_NAFTEAPD	2007-2011	Nurse aides per 1000 adjusted inpatient days	Drop
	HOSP_OPSURGPCT	2007-2011	Percentage of all surgeries performed in outpatient setting	Drop
	H_LOCTCH	1993-1997	Location/teaching status of hospital: (1) rural, (2) urban non-teaching, (3) urban teaching	N/A
	LOCTEACH	1988-1992	Location/teaching status of hospital: (1) rural, (2) urban non-teaching, (3) urban teaching	N/A
	HOSP_REGION	1998-2011	Region of hospital (Formerly STRATA): (1) Northeast, (2) Midwest, (3) South, (4) West	Keep
	HOSP_Division		Census Divisin of hospital (STRATA): (1) New England, (2) Middle Atlantic, (3) East North Central, (4) West North Central, (5) South Atlantic, (6) East South Central, (7) West South Central, (8) Mountain, (9) Pacific	Add
	H_REGION	1993-1997	Region of hospital: (1) Northeast, (2) Midwest, (3) South, (4) West	N/A
	ST_REG	1988-1992	Region of hospital: (1) Northeast, (2) Midwest, (3) South, (4) West	N/A
	HOSP_TEACH	1998-2011	Teaching status of hospital: (0) non-teaching, (1) teaching	Drop

Type of Data Element	HCUP Name	Years Available	Coding Notes	Plan For 2012
	<i>H_TCH</i>	<i>1993-1997</i>	<i>Teaching status of hospital: (0) non-teaching, (1) teaching</i>	<i>N/A</i>
	NIS_STRATUM	1998-2011	Stratum used to sample hospitals beginning in 1998; includes geographic region, control, location/teaching status, and bed size	Keep
	<i>STRATUM</i>	<i>1988-1997</i>	<i>Stratum used to sample hospitals prior to 1998; includes geographic region, control, location/teaching status, and bed size</i>	<i>N/A</i>
	<i>STRAT_ST</i>	<i>1988-1997</i>	<i>Stratum for State-specific weights</i>	<i>N/A</i>
Hospital weights	HOSPWT	1998-2011	Weight to hospitals in AHA universe (i.e., total U.S.) beginning in 1998	Drop
	<i>HOSPWT_U</i>	<i>1988-1997</i>	<i>Weight to hospitals in AHA universe (i.e., total U.S.) prior to 1998</i>	<i>N/A</i>
	<i>HOSPWT_F</i>	<i>1988-1997</i>	<i>Weight to hospitals in the sample frame</i>	<i>N/A</i>
	<i>HOSPWT_S</i>	<i>1988-1997</i>	<i>Weight to hospitals in the State</i>	<i>N/A</i>

[Return to Report](#)

**Table B-3. Data Elements in the NIS Disease Severity Measures Files**

Data elements that are *italicized* are not included in the 2011 NIS Inpatient Core files, but are only available in previous years' files. All other data elements listed below are available for all States in the 2011 NIS Disease Severity Measures files.

Type of Data Element	HCUP Name	Years Available	Coding Notes	Plan For 2012
AHRQ Comorbidity Software (AHRQ)	CM_AIDS	2002-2011	AHRQ comorbidity measure: Acquired immune deficiency syndrome : (0) Comorbidity is not present, (1) Comorbidity is present	Keep
	CM_ALCOHOL	2002-2011	AHRQ comorbidity measure: Alcohol abuse: (0) Comorbidity is not present, (1) Comorbidity is present	Keep
	CM_ANEMDEF	2002-2011	AHRQ comorbidity measure: Deficiency anemias : (0) Comorbidity is not present, (1) Comorbidity is present	Keep
	CM_ARTH	2002-2011	AHRQ comorbidity measure: Rheumatoid arthritis/collagen vascular diseases : (0) Comorbidity is not present, (1) Comorbidity is present	Keep
	CM_BLDLOSS	2002-2011	AHRQ comorbidity measure: Chronic blood loss anemia: (0) Comorbidity is not present, (1) Comorbidity is present	Keep
	CM_CHF	2002-2011	AHRQ comorbidity measure: Congestive heart failure: (0) Comorbidity is not present, (1) Comorbidity is present	Keep
	CM_CHRNLUNG	2002-2011	AHRQ comorbidity measure: Chronic pulmonary disease: (0) Comorbidity is not present, (1) Comorbidity is present	Keep
	CM_COAG	2002-2011	AHRQ comorbidity measure: Coagulopathy: (0) Comorbidity is not present, (1) Comorbidity is present	Keep
	CM_DEPRESS	2002-2011	AHRQ comorbidity measure: Depression: (0) Comorbidity is not present, (1) Comorbidity is present	Keep
	CM_DM	2002-2011	AHRQ comorbidity measure: Diabetes, uncomplicated: (0) Comorbidity is not present, (1) Comorbidity is present	Keep
	CM_DMCX	2002-2011	AHRQ comorbidity measure: Diabetes with chronic complications: (0) Comorbidity is not present, (1) Comorbidity is present	Keep
	CM_DRUG	2002-2011	AHRQ comorbidity measure: Drug abuse: (0) Comorbidity is not present, (1) Comorbidity is present	Keep
	CM_HTN_C	2002-2011	AHRQ comorbidity measure: Hypertension, (combine uncomplicated and complicated): (0) Comorbidity is not present, (1) Comorbidity is present	Keep

Type of Data Element	HCUP Name	Years Available	Coding Notes	Plan For 2012
	CM_HYPOTHY	2002-2011	AHRQ comorbidity measure: Hypothyroidism: (0) Comorbidity is not present, (1) Comorbidity is present	Keep
	CM_LIVER	2002-2011	AHRQ comorbidity measure: Liver disease: (0) Comorbidity is not present, (1) Comorbidity is present	Keep
	CM_LYMPH	2002-2011	AHRQ comorbidity measure: Lymphoma : (0) Comorbidity is not present, (1) Comorbidity is present	Keep
	CM_LYTES	2002-2011	AHRQ comorbidity measure: Fluid and electrolyte disorders: (0) Comorbidity is not present, (1) Comorbidity is present	Keep
	CM_METS	2002-2011	AHRQ comorbidity measure: Metastatic cancer: (0) Comorbidity is not present, (1) Comorbidity is present	Keep
	CM_NEURO	2002-2011	AHRQ comorbidity measure: Other neurological disorders: (0) Comorbidity is not present, (1) Comorbidity is present	Keep
	CM_OBESE	2002-2011	AHRQ comorbidity measure: Obesity: (0) Comorbidity is not present, (1) Comorbidity is present	Keep
	CM_PARA	2002-2011	AHRQ comorbidity measure: Paralysis: (0) Comorbidity is not present, (1) Comorbidity is present	Keep
	CM_PERIVASC	2002-2011	AHRQ comorbidity measure: Peripheral vascular disorders: (0) Comorbidity is not present, (1) Comorbidity is present	Keep
	CM_PSYCH	2002-2011	AHRQ comorbidity measure: Psychoses: (0) Comorbidity is not present, (1) Comorbidity is present	Keep
	CM_PULMCIRC	2002-2011	AHRQ comorbidity measure: Pulmonary circulation disorders: (0) Comorbidity is not present, (1) Comorbidity is present	Keep
	CM_RENLFAIL	2002-2011	AHRQ comorbidity measure: Renal failure: (0) Comorbidity is not present, (1) Comorbidity is present	Keep
	CM_TUMOR	2002-2011	AHRQ comorbidity measure: Solid tumor without metastasis : (0) Comorbidity is not present, (1) Comorbidity is present	Keep
	CM_ULCER	2002-2011	AHRQ comorbidity measure: Peptic ulcer disease excluding bleeding: (0) Comorbidity is not present, (1) Comorbidity is present	Keep
	CM_VALVE	2002-2011	AHRQ comorbidity measure: Valvular disease: (0) Comorbidity is not present, (1) Comorbidity is present	Keep
	CM_WGHTLOSS	2002-2011	AHRQ comorbidity measure: Weight loss: (0) Comorbidity is not present, (1) Comorbidity is present	Keep



Type of Data Element	HCUP Name	Years Available	Coding Notes	Plan For 2012
All Patient Refined DRG (3M)	APRDRG	2002-2011	All Patient Refined DRG	Keep
	APRDRG_Risk_Mortality	2002-2011	All Patient Refined DRG: Risk of Mortality Subclass: (0) No class specified,(1) Minor likelihood of dying,(2) Moderate likelihood of dying,(3) Major likelihood of dying,(4) Extreme likelihood of dying	Keep
	APRDRG_Severity	2002-2011	All Patient Refined DRG: Severity of Illness Subclass: (0) No class specified,(1) Minor loss of function (includes cases with no comorbidity or complications),(2) Moderate loss of function,(3) Major loss of function,(4)Extreme loss of function	Keep
<i>All-Payer Severity-adjusted DRG (Optum Insight)</i>	APSDRG	2002-2009	<i>All-Payer Severity-adjusted DRG</i>	N/A
	APSDRG_Mortality_Weight	2002-2009	<i>All-Payer Severity-adjusted DRG: Mortality Weight</i>	N/A
	APSDRG_LOS_Weight	2002-2009	<i>All-Payer Severity-adjusted DRG: Length of Stay Weight</i>	N/A
	APSDRG_Charge_Weight	2002-2009	<i>All-Payer Severity-adjusted DRG: Charge Weight</i>	N/A
<i>Disease Staging (Thomson Reuters)</i>	DS_DX_Category1	2002-2010	<i>Disease Staging: Principal Disease Category</i>	N/A
	DS_Stage1	2002-2010	<i>Disease Staging: Stage of Principal Disease Category</i>	N/A
	DS_LOS_Level	2002-2007	<i>Disease Staging: Length of Stay Level: (1) Very low (less than 5% of patients),(2) Low (5 - 25% of patients),(3) Medium (25 - 75% of patients),(4) High (75 - 95% of patients),(5) Very high (greater than 95% of patients)</i>	N/A
	DS_LOS_Scale	2002-2007	<i>Disease Staging: Length of Stay Scale</i>	N/A
	DS_Mrt_Level	2002-2007	<i>Disease Staging: Mortality Level: (0) Extremely low - excluded from percentile calculation (mortality probability less than .0001), (1) Very low (less than 5% of patients), (2) Low (5 - 25% of patients), (3) Medium (25 - 75% of patients), (4) High (75 - 95% of patients), (5) Very high (greater than 95% of patients)</i>	N/A
	DS_Mrt_Scale	2002-2007	<i>Disease Staging: Mortality Scale</i>	N/A
	DS_RD_Level	2002-2007	<i>Disease Staging: Resource Demand Level : (1) Very low (less than 5% of patients),(2) Low (5 - 25% of patients),(3) Medium (25 - 75% of patients),(4) High (75 - 95% of patients),(5) Very high (greater than 95% of patients)</i>	N/A
	DS_RD_Scale	2002-2007	<i>Disease Staging: Resource Demand Scale</i>	N/A

Type of Data Element	HCUP Name	Years Available	Coding Notes	Plan For 2012
Linkage Data Elements	HOSPID	2002-2011	HCUP hospital identification number	Drop
	HOSP_NIS		NIS hospital number (links to Hospital Weights file; does not link to previous years)	Add
	KEY	2002-2011	HCUP record identifier	Drop
	KEY_NIS		Unique record number for file beginning in 2012.	Add

[Return to Report](#)

**Table B-4. Data Elements in the NIS Diagnosis and Procedure Groups Files**

Data elements that are *italicized* are not included in the 2011 NIS Inpatient Core files, but are only available in previous years' files. All other data elements listed below are available for all States in the 2011 NIS Diagnosis and Procedure Groups files.

Type of Data Element	HCUP Name	Years Available	Coding Notes	Plan For 2012
Clinical Classifications	CCSMGN1 –	2005-2006	<i>CCS-MHSA general category for all diagnoses</i>	N/A
	CCSMGN15			
Software category for Mental Health and Substance Abuse (CCS-MHSA)	CCSMSP1 –	2005-2006	<i>CCS-MHSA specific category for all diagnoses</i>	N/A
	CCSMSP15			
Chronic Condition Indicator	ECCSMGN1 –	2005-2006	<i>CCS-MHSA general category for all external cause of injury codes</i>	N/A
	ECCSMGN4			
Chronic Condition Indicator	CHRON1 –	2005-2011	Chronic condition indicator for all diagnoses: (0) <i>non-chronic condition</i> , (1) <i>chronic condition</i> . Beginning in 2009, the diagnosis array was increased from 15 to 25.	Keep
	CHRON25			
Chronic Condition Indicator	CHRONB1 –	2005-2011	Chronic condition indicator body system for all diagnoses: (1) Infectious and parasitic disease, (2) Neoplasms, (3) Endocrine, nutritional, and metabolic diseases and immunity disorders, (4) Diseases of blood and blood-forming organs, (5) Mental disorders, (6) Diseases of the nervous system and sense organs, (7) Diseases of the circulatory system, (8) Diseases of the respiratory system, (9) Diseases of the digestive system, (10) Diseases of the genitourinary system, (11) Complications of pregnancy, childbirth, and the puerperium, (12) Diseases of the skin and subcutaneous tissue, (13) Diseases of the musculoskeletal system, (14) Congenital anomalies, (15) Certain conditions originating in the perinatal period, (16) Symptoms, signs, and ill-defined conditions, (17) Injury and poisoning, (18) Factors influencing health status and contact with health services. Beginning in 2009, the diagnosis array was increased from 15 to 25.	Keep
	CHRONB25			
Multi-Level Clinical Classifications Software (CCS) Category	DXMCCS1	2009-2011	Multi-level clinical classification software (CCS) for principal diagnosis. Four levels for diagnoses presenting both the general groupings and very specific conditions	Keep
	E_MCCS1	2009-2011	Multi-level clinical classification software (CCS) for first listed E Code. Four levels for E codes presenting both the general groupings and very specific conditions	Keep
	PRMCCS1	2009-2011	Multi-level clinical classification software (CCS) for principal procedure. Three levels for procedures presenting both the general groupings and very specific conditions	Keep

<b>Type of Data Element</b>	<b>HCUP Name</b>	<b>Years Available</b>	<b>Coding Notes</b>	<b>Plan For 2012</b>
Procedure Class	PCLASS1 – PCLASS15	2005-2011	Procedure Class for all procedures: (1) Minor Diagnostic, (2) Minor Therapeutic, (3) Major Diagnostic, (4) Major Therapeutic	Keep
Linkage Data Elements	HOSPID	2002-2011	HCUP hospital identification number	Drop
	HOSP_NIS		NIS hospital number (links to Hospital Weights file; does not link to previous years)	Add
	KEY	2002-2011	HCUP record identifier	Drop
	KEY_NIS		Unique record number for file beginning in 2012.	Add

[Return to Report](#)